



DUNNAIR
(Aust) Pty Ltd

WPR25L

**Ducted Water Cooled
R410a Refrigerant**

Packaged Vertical Type

TECHNICAL SPECIFICATION

Total Cooling Capacity	23.1 kW	Refrigerant	R410A
Electrical Input (Cooling)	5.6 kW	Refrigerant Charge	3.5 kg
E.E.R.(Cooling)	4.1	Minimum Water Flow	1.05l/s
Running Amps (Total)	18.8A	Water Coil Pressure Drop	44kPa
Fan Motor Full Load Amps	6.0 A	Filter (Option)	EU1
Electrical Supply Required	3 Ph.415V.50Hz	Electric Heater (Option)	15 kW

COOLING CAPACITY (kW)

AIR FLOW RATE (L/S)		1150			
COIL E.A.T.	DB °C	23	27	31	
	WB °C	17	19	21	
Entering Water Temperature (E.W.T) °C	20	T	24.5	25.8	27.1
		S	17.4	19.8	22.1
		FL	1.3	1.3	1.3
		HR	30.2	31.4	32.8
	25	T	23.3	24.8	27.3
		S	17.5	19.4	22.2
		FL	1.3	1.3	1.3
		HR	29.1	30.5	33.3
	30	T	21.9	<u>23.1</u>	25.8
		S	16.2	<u>18.6</u>	21.5
		FL	1.3	<u>1.3</u>	1.3
		HR	27.4	<u>28.7</u>	31.6
	35	T	20.5	21.6	22.5
		S	15.6	18.0	20.2
		FL	1.3	1.3	1.3
		HR	26.1	27.2	28.2
40	T	19.6	20.1	21.1	
	S	15.2	17.4	19.7	
	FL	1.3	1.3	1.3	
	HR	25.2	25.6	26.9	

HEATING CAPACITY (kW)

WPR Reverse Cycle Version

AIR FLOW RATE (L/S)		1150			
WATE FLOW RATE (L/S)		1.3			
COIL E.A.T.	DB °C	18	21	25	
Entering Water Temperature (E.W.T) °C	15	HC	21.0	20.8	19.8
		Hab	15.7	15.4	14.6
		LWT	11.1	11.2	11.4
		INPT	5.3	5.3	5.3
	20	HC	22.3	<u>22.1</u>	21.0
		Hab	16.9	<u>16.6</u>	15.7
		LWT	15.9	<u>15.9</u>	16.1
		INPT	5.5	<u>5.5</u>	5.3
	25	HC	24.2	23.9	23.0
		Hab	18.5	18.1	17.3
		LWT	20.5	20.6	20.8
		INPT	5.8	5.8	5.8

HC = Heating Capacity (kW)

Hab = Heat Absorbed (kW)

L.W.T.= Leaving Water Temperature (°C)

E.A.T.= Entering Air Temperature (°C)

INPT = Compressor Input Power (kW)

— = Nominal Capacity (kW)

Note: All units are reverse cycle heat pump units. Models can also be provided as cooling only or cooling only with electric heater.

T = Total Capacity (kW)

S = Sensible Capacity (kW)

FL = Water Flow (l/s)

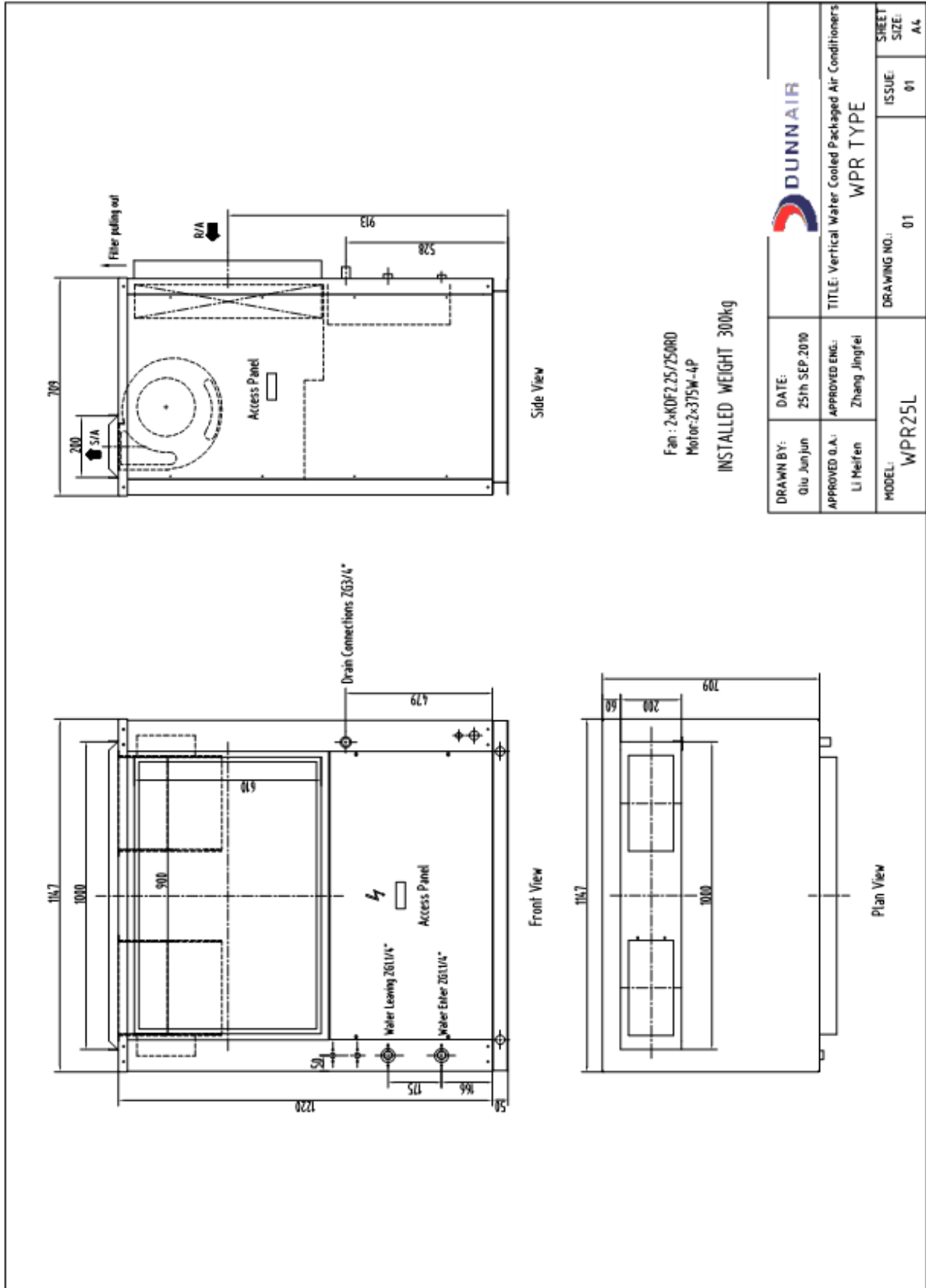
E.A.T.= Entering Air Temperature (°C)

— = Nominal Capacity (kW)

HR = Heat Rejection

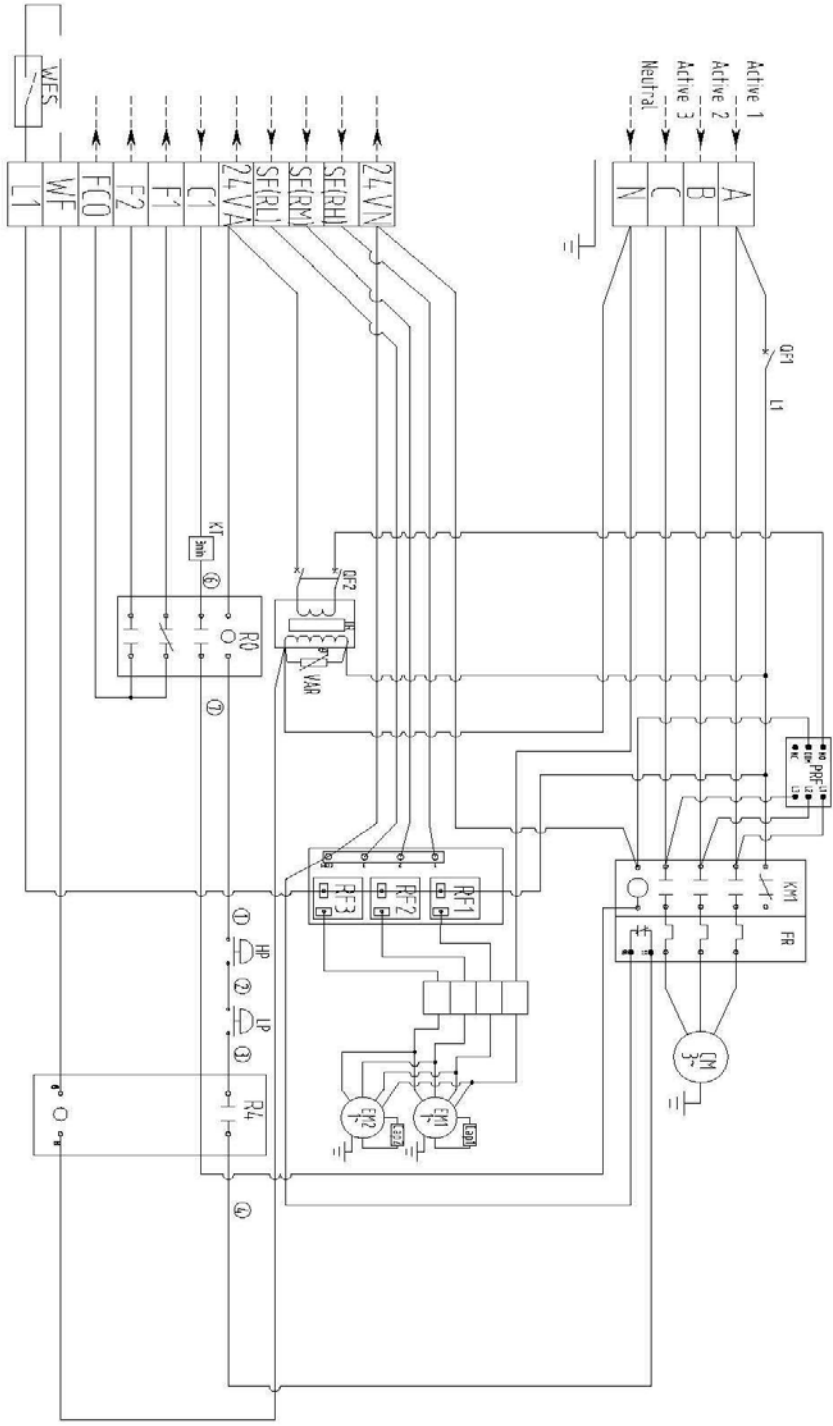
- Note:**
- Capacities are gross and do not include allowance for fan motor heat loss. For fan motor heat loss refers to Air Handling Performance.
 - Water flow and cooling capacity based on 5°C water temperature difference.

DIMENSIONS (mm)



WIRING DIAGRAMS – Cooling Only

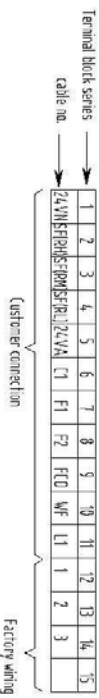
Cooling Only
Power supply
4/15V 50HZ 3Phase



Code Instruction

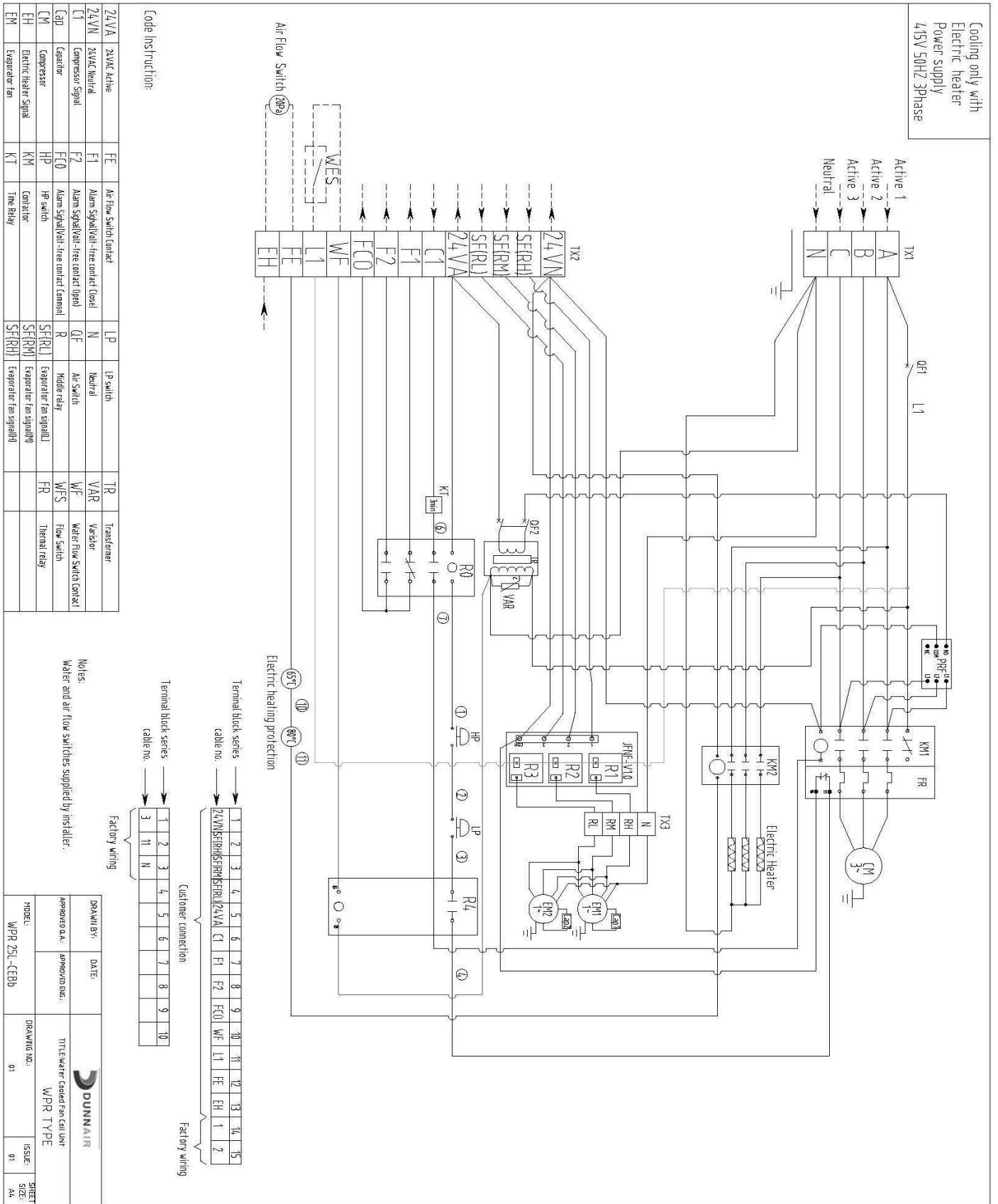
24VVA	24VAC Active	FCO	Alarm Signal/Valv-free control (Open)	PQF	Phase Protection	WFS	Water Flow Switch Contact
24VN	24VAC Neutral	FR	Thermal relay	QF	Control Circuit Breakers	WFS	Flow Switch
C1	Compressor Signal	HP	HP switch	R	Relay relay	TR	Transformer
Cap	Capacitor	JFNE	Ready Group	TX	Terminal Blocks	VAR	Variable
CM	Compressor	KM	Contact	SH	Stop Switch		
EM	Exhaust fan	KT	Time Relay	SER(L)	Exhaust fan signal(L)		
F1	Alarm signal/Valv-free control (Close)	LP	LP switch	SF(R)M	Exhaust fan signal(M)		
F2	Alarm signal/Valv-free control (Open)	N	Neutral	SF(R)H	Exhaust fan signal(H)		

Notes:
Water and air flow switches supplied by installer.

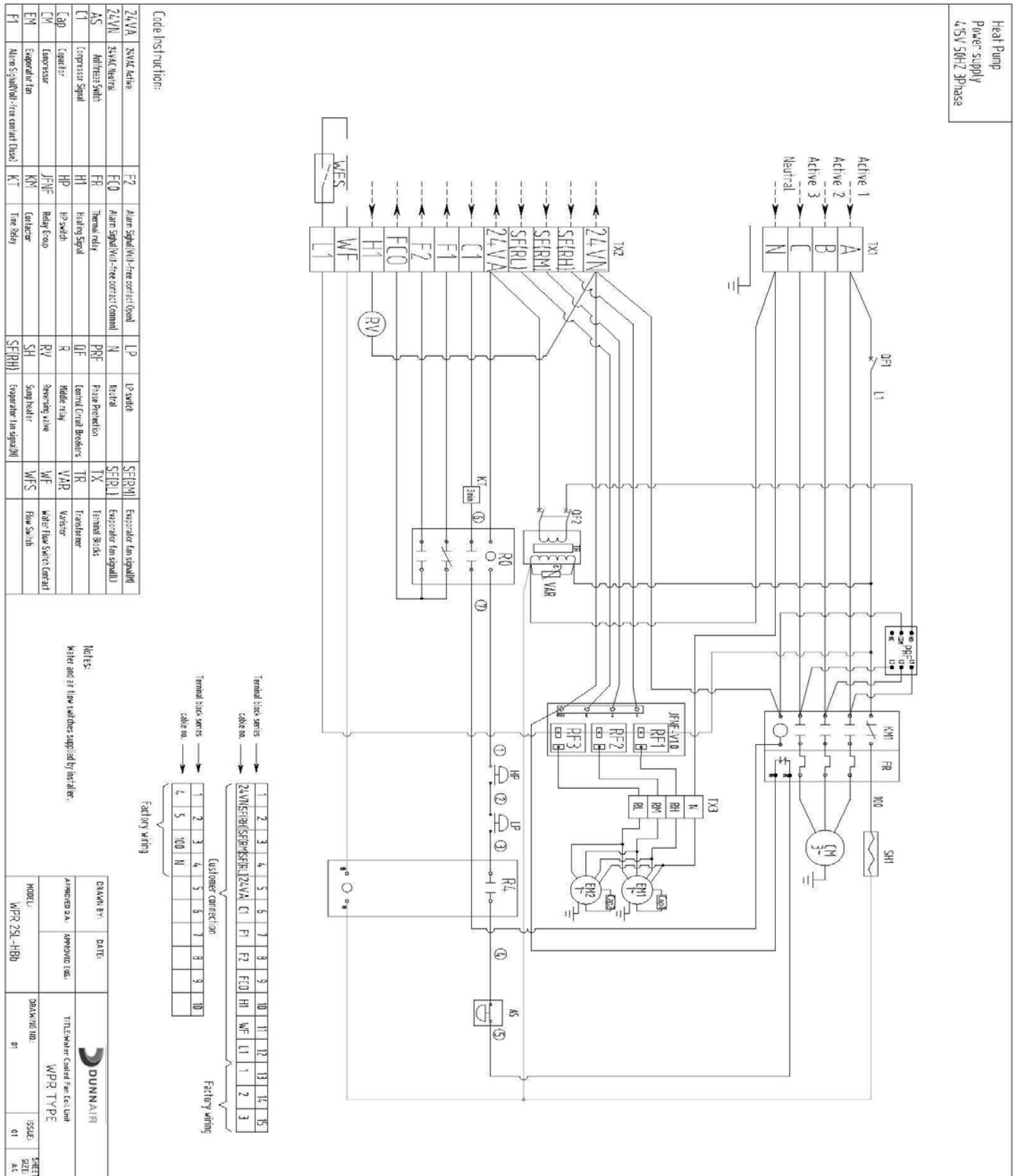


DESIGNED BY	DATE	DUNN AIR	
APPROVED BY	ISSUED DATE	TITLE: Water Cooled Packaged Unit WPR TYPE	
MODEL	DRAGS NO.	91	ISSUE DATE
WPR 25L-CB5			01 AL

WIRING DIAGRAMS – Cooling Only with Electric Heater

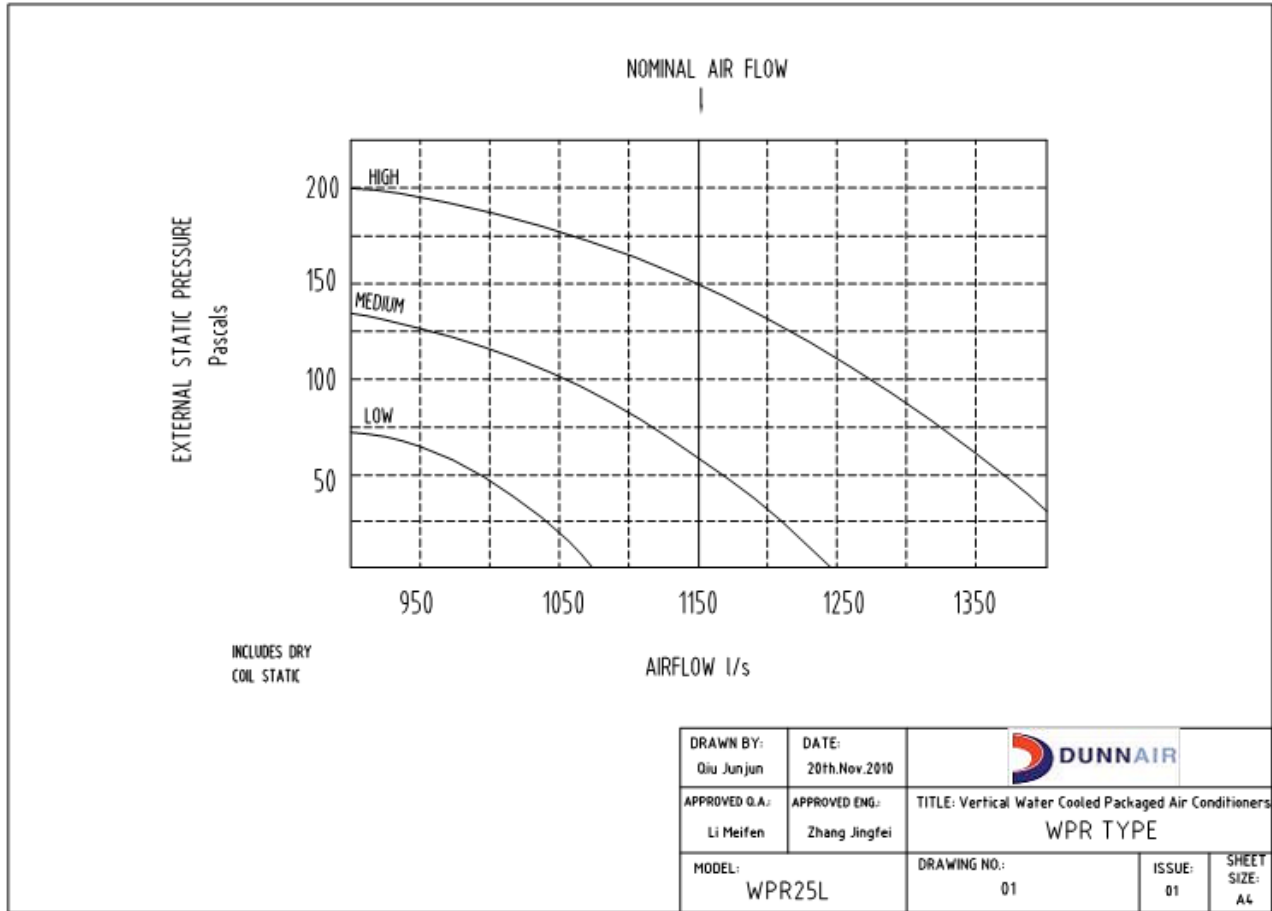


WIRING DIAGRAMS – Reverse Cycle



AIR HANDLING PERFORMANCE

Fan Curve (Without Filter)



Note:

1. In tropical (high humidity) conditions, care must be taken to select an air flow which gives a suitable coil face air velocity, to prevent water carry over.
2. For applications with low resistance, be sure not to exceed the fan motor full load Amps.
3. Applications using full or high proportions of fresh air should be referred to DUNNAIR engineering office to establish of unit model.
4. EU1 rate filter pressure loss 15Pa.

AIR HANDLING PERFORMANCE

Sound Levels

WPR25L Sound Pressure Curve

A Class: 57.7dB

Hz	dB
64Hz	49.5
125Hz	54.5
250Hz	55.8
500Hz	56.4
1000Hz	54.5
2000Hz	48.5
4000Hz	43.1
8000Hz	39.0



Note: Occupant at least 1.0m from sound source.

DRAWN BY: Qiu JunJun	DATE: 15th.Dec.2010			
APPROVED Q.A.: Li Meifen	APPROVED ENG.: Zhang Jingfei	TITLE: Vertical Water Cooled Packaged Air Conditioners WPR TYPE		
MODEL: WPR25L		DRAWING NO.: 01	ISSUE: 01	SHEET SIZE: A4