



DUNNAIR
(Aust) Pty Ltd

WPR16

Packaged Horizontal Type

**Ducted Water Cooled
R410a Refrigerant**

TECHNICAL SPECIFICATION

Total Cooling Capacity	15.8 kW	Refrigerant	R410A
Electrical Input (Cooling)	4.11 kW	Refrigerant Charge	2.4 kg
E.E.R.(Cooling)	3.8	Minimum Water Flow	0.8 l/s
Running Amps (Total)	12.2A	Water Coil Pressure Drop	40 kPa
Fan Motor Full Load Amps	4.0 A	Filter (Option)	EU1
Electrical Supply Required	3 Ph.415V.50Hz	Electric Heater (Option)	12.0 kW

COOLING CAPACITY (kW)

AIR FLOW RATE (L/S)		850			
COIL E.A.T.	DB °C	23	27	31	
	WB °C	17	19	21	
Entering Water Temperature (E.W.T) °C	20	T	16.8	17.7	18.5
		S	12.2	14.0	15.7
		FL	1.0	1.0	1.0
		HR	21.0	21.8	22.8
	25	T	16.0	17.0	18.7
		S	12.3	13.7	15.8
		FL	1.0	1.0	1.0
		HR	20.2	21.1	23.0
	30	T	15.0	<u>15.8</u>	17.6
		S	11.4	<u>13.2</u>	15.4
		FL	1.0	<u>1.0</u>	1.0
		HR	19.0	<u>19.9</u>	21.9
	35	T	14.0	14.8	15.4
		S	11.0	12.8	14.5
		FL	1.0	1.0	1.0
		HR	18.1	18.9	19.5
40	T	13.4	13.7	14.4	
	S	10.7	12.4	14.1	
	FL	1.0	1.0	1.0	
	HR	17.4	17.7	18.6	

T = Total Capacity (kW) S = Sensible Capacity (kW)
 FL = Water Flow (l/s) E.A.T.= Entering Air Temperature (°C)
 ___ = Nominal Capacity (kW) HR = Heat Rejection

Note: 1. Capacities are gross and do not include allowance for fan motor heat loss. For fan motor heat loss refers to Air Handling Performance.
 2. Water flow and cooling capacity based on 5°C water temperature difference.

HEATING CAPACITY (kW)

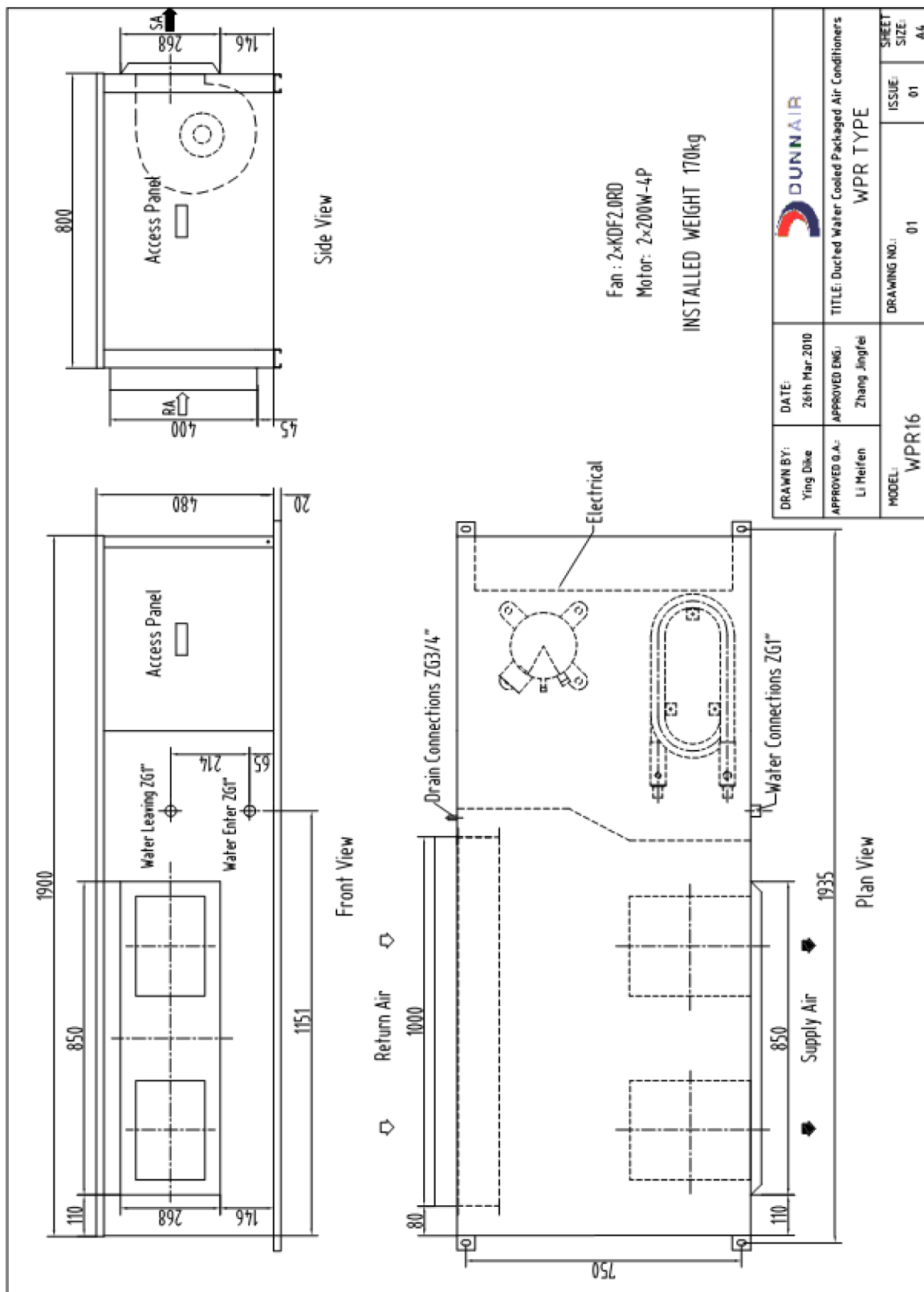
WPR Reverse Cycle Version

AIR FLOW RATE (L/S)		850			
WATE FLOW RATE (L/S)		1.0			
COIL E.A.T.	DB °C	18	21	25	
Entering Water Temperature (E.W.T) °C	15	HC	16.1	16.0	15.3
		Hab	12.0	11.8	11.2
		LWT	11.1	11.2	11.4
		INPT	4.2	4.2	4.0
	20	HC	17.2	<u>17.0</u>	16.2
		Hab	12.9	<u>12.8</u>	12.1
		LWT	15.9	<u>15.9</u>	16.1
		INPT	4.2	<u>4.2</u>	4.1
	25	HC	18.6	18.4	17.7
		Hab	14.2	13.9	13.3
		LWT	20.5	20.6	20.8
		INPT	4.5	4.5	4.4

HC = Heating Capacity (kW) Hab = Heat Absorbed (kW)
 L.W.T.= Leaving Water Temperature (°C) E.A.T.= Entering Air Temperature (°C)
 INPT = Compressor Input Power (kW) ___ = Nominal Capacity (kW)

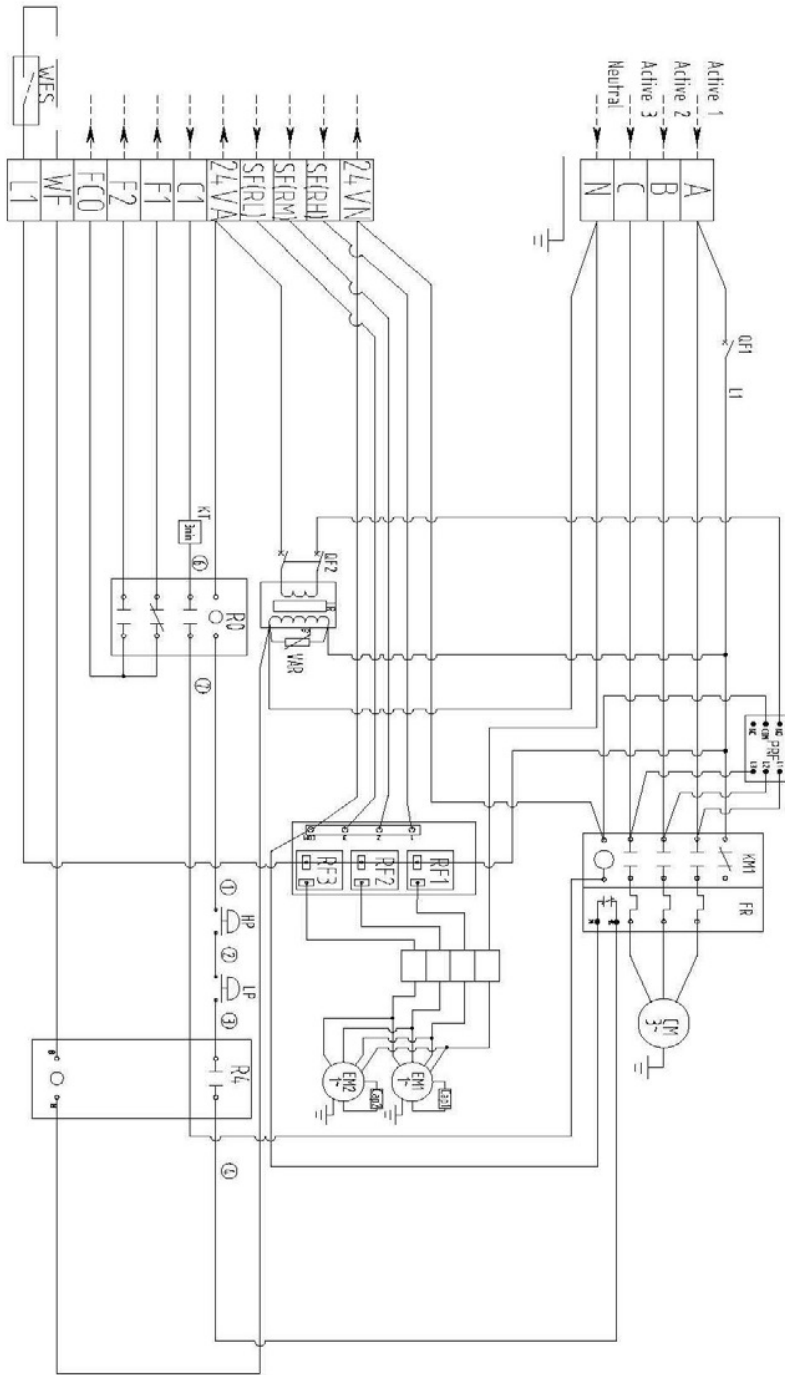
Note: All units are reverse cycle heat pump units. Models can also be provided as cooling only or cooling only with electric heater.

DIMENSIONS (mm)



WIRING DIAGRAMS – Cooling Only

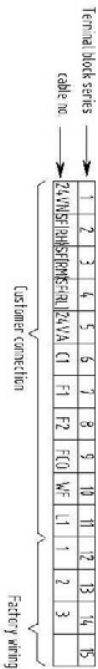
Cooling Only
Power supply
415V 50Hz 3Phase



Code Instructions:

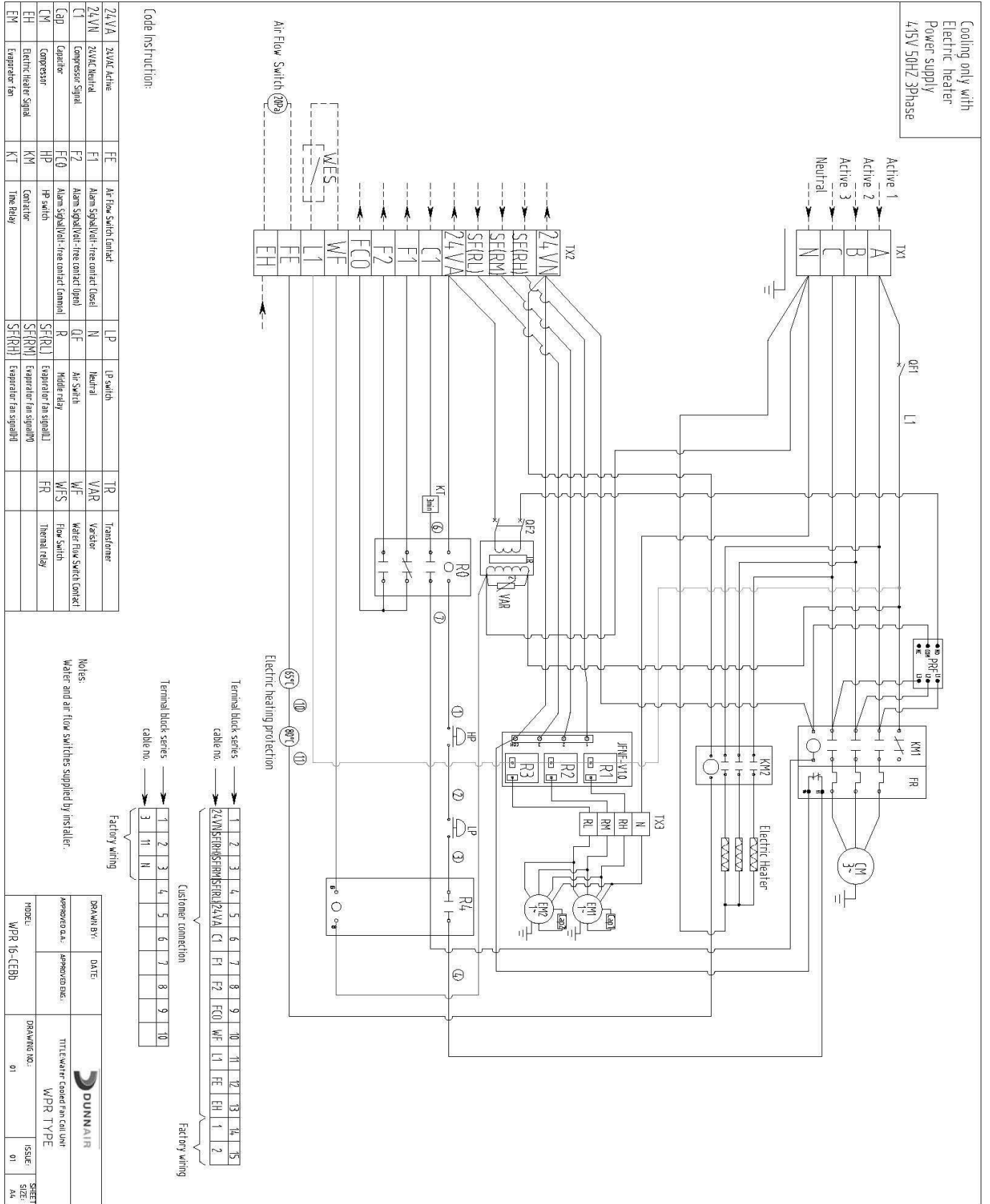
24VVA	24VAC Motor	FCO	Alarm Signal/Free contact Terminal	PRF	Phase Protection	W/F	Water Flow Switch Contact
24VVA	24VAC Motor	FR	Thermal relay	QF	Control Circuit Breakers	WFS	Flow Switch
C1	Compressor Start	HP	HP switch	R	Midline relay	TR	Transformer
CF1	Capacitor	JF-NF	Relay group	TX	Terminal blocks	VAR	Variable
CM	Compressor	KM	Contact	SH	Shunt heater		
EM	Evaporator fan	KT	Time Relay	SER(L)	Evaporator fan start		
F1	Alarm Signal/Noi-free contact (Close)	LP	LP switch	SER(W)	Evaporator fan stop		
F2	Alarm Signal/Noi-free contact (Open)	N	Neutral	SER(R)	Evaporator fan stop		

Notes:
Water and air flow switches supplied by installer.



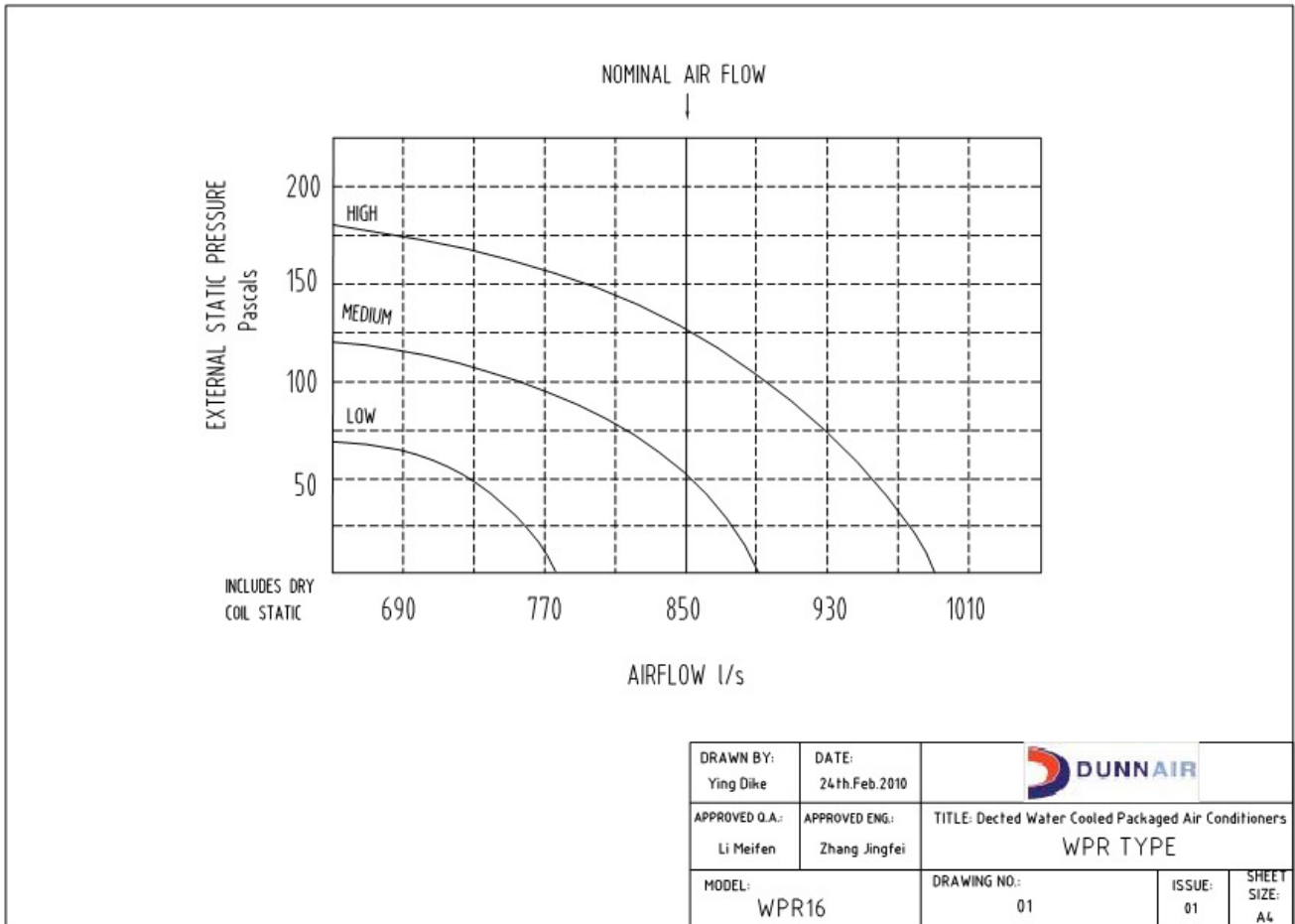
DRAMA BY:	DATE:	TITLE/Weather Cooler Fan Coil Unit
APPROVED BY:	APPROVED DATE:	WPR TYPE
MODEL:	DRAMA NO.:	ISSUE:
WPR 15-13b	01	01
		SIZE:
		A4

WIRING DIAGRAMS – Cooling Only with Electric Heater



AIR HANDLING PERFORMANCE

Fan Curve (Without Filter)



Note:

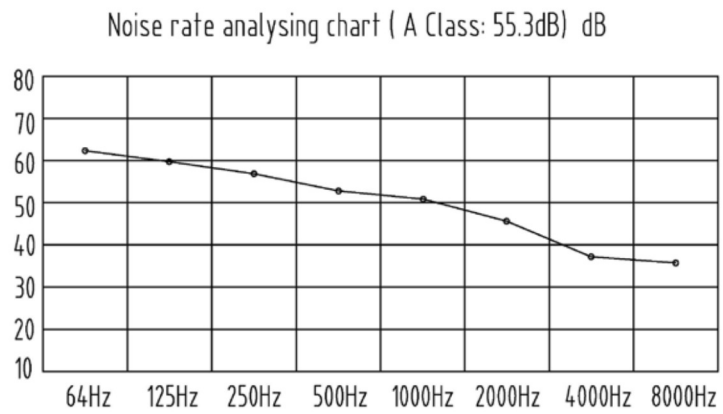
1. In tropical (high humidity) conditions, care must be taken to select an air flow which gives a suitable coil face air velocity, to prevent water carry over.
2. For applications with low resistance, be sure not to exceed the fan motor full load Amps.
3. Applications using full or high proportions of fresh air should be referred to DUNNAIR engineering office to establish of unit model.
4. EU1 rate filter pressure loss 15Pa.

AIR HANDLING PERFORMANCE


Sound Levels

WPR16 Noise rate analysing chart
 A Class: 55.3dB

Hz	dB
64Hz	62.5
125Hz	59.1
250Hz	55.8
500Hz	53.0
1000Hz	49.7
2000Hz	45.3
4000Hz	38.2
8000Hz	36.6



Note: 1m from source with 1m insulated duct and fully reflective surface surrounding unit.

DRAWN BY: Ying Dike	DATE: 10th.Dec.2010			
APPROVED Q.A.: Li Meifen	APPROVED ENG.: Zhang Jingfei	TITLE: Dected Water Cooled Packaged Air Conditioners WPR TYPE		
MODEL: WPR16	DRAWING NO.: 01	ISSUE: 01	SHEET SIZE: A4	