

Super Slim Ceiling Mounted Air Handling Unit LFPS Series LFPS150

Model Number Configuration

LFPS150-4+1: 4 + 1 Row Super Slim Ceiling Mounted

LFPS150-6+1: 6 + 1 Row Super Slim Ceiling Mounted

PERFORMANCE DATA

RETURN AIR

Model	Air Flow	4 Rows Cooling				1 Row Heating			External Excess Pressure			Motor Power			Weight
		Total	Sensible	Water Flow	Water Resistance	Rated Heating	Water Flow	Water Resistance	I	II	III	I	II	III	
		l/s	kW	kW	l/s	kPa	kW	l/s	kPa	Pa	Pa	Pa	kW	kW	
LFPS150-4+1	4167	86.4	61.3	4.1	41.1	50.8	1.2	19.4	200	300	360	4	5.5	5.5	424.8
LFPS150-6+1	4167	103.1	71.4	4.9	12.6	50.8	1.2	19.4	200	300	360	4	5.5	5.5	466.8

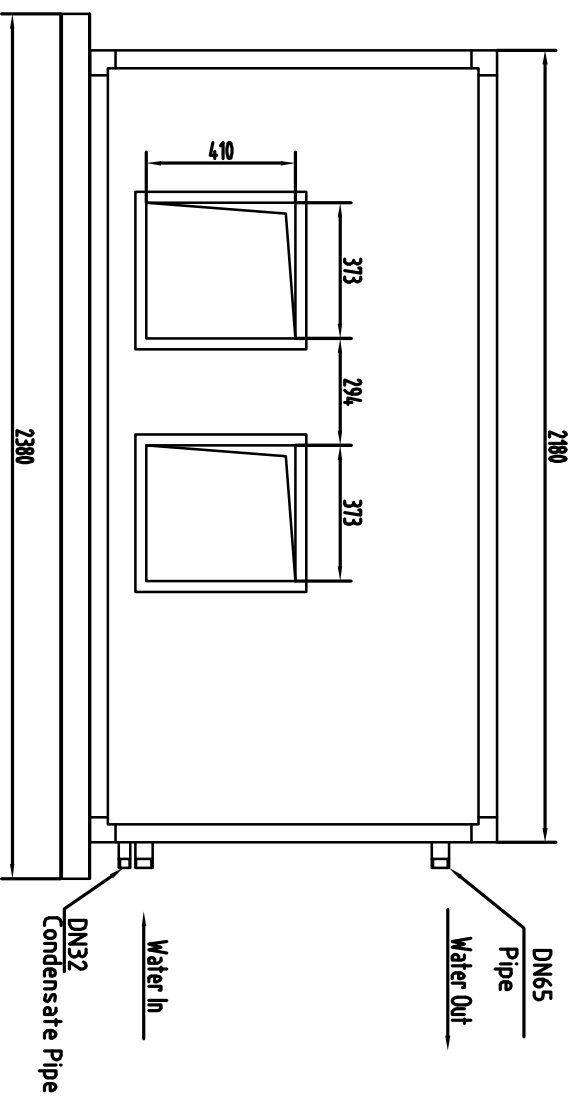
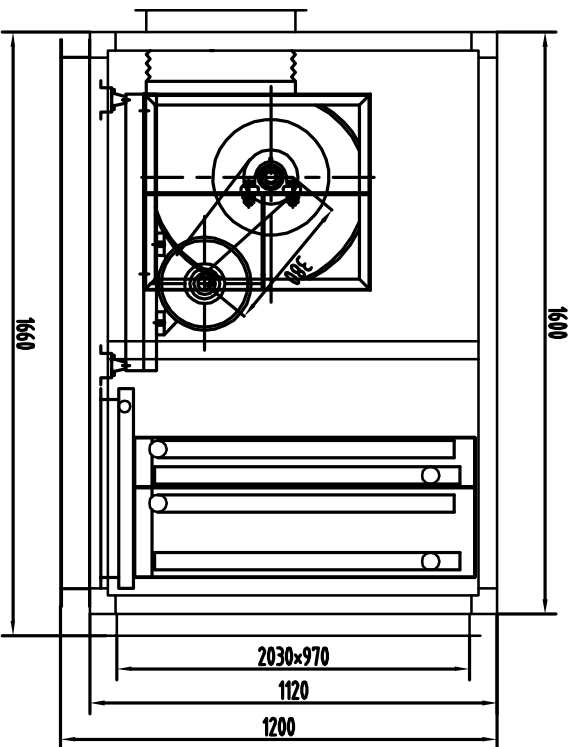
Notes for Return Air:

1. Cooling: The water in/out temp. is 7°C/12°C; the air in temp. is 27°C DB / 19.5°C WB
2. Heating: The water in temp. is 80°C / 50°C; the air in temp. is 21°C DB..
3. The motor power offered is the motor output power.
4. The above performance is for reference only. Different air and water conditions would lead to different cooling capacity.

SPECIFICATION

- **Coil:**
 LFPS010W-LFPS 120W : ϕ 9.52mm, copper tube, aluminium fins
 LFPS135W-LFPS 300W: ϕ 12.7mm, copper tube, aluminium fins
- **Fan and motor:**
 LFPS 010W-LFPS025W: direct driven, forward curved centrifugal fan|
 LFPS 030W-LFPS 300W: belt driven, forward curved centrifugal fan
- **Filter: 15mm panel filter**
- **Cabinet: 25mm thick double skinned panel**
- **Drip-tray: powder painting steel sheet**

Diagrams of: LFPS 150



Air Flow l/s	4.167			
External Overbottom Pressure Pa	200			
Coil Rows: Cooling+Heating	4+1	6+1	4+1	6+1
Fan Model(Drive Type)	KDFTS15-1(K(Belt Drive))			
Fan Speed r/min	791	829	877	909
Motor Pulley	SPB112-2	SPB118-2	SPB125-2	SPB125-2
Fan pulley	SPB200-2	SPB200-2	SPB200-2	SPB190-2
Belt Model/Quantity	SPB1250/2	SPB1250/2	SPB1250/2	SPB1250/2
Motor Power-Pole	4KW-4	4KW-4	5.5KW-4	5.5KW-4
A FLA	8.1A	8.1A	10.8A	10.8A
Voltage	4.15V/3Ph/50HZ			
Coil Diameter mm/Fins:lengthxwidth mm	4.78"(ø12.7)/1890x889(ube no:28)			
Filter:lengthxwidthxThickness mm/quantity	505x480x5/8			

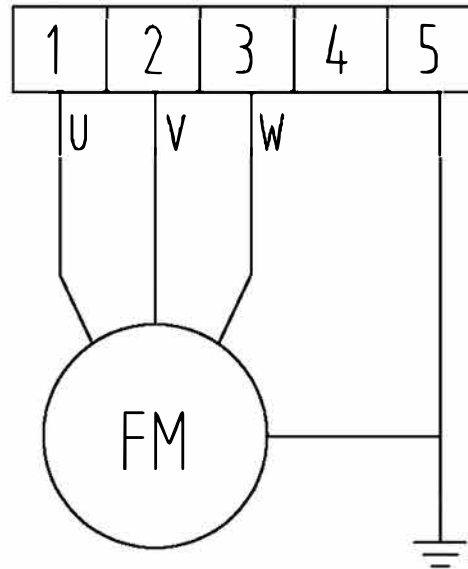
Note: The unit shown is of left hand type.



DRAWN BY: GUO JINGPENG	DATE: 24/02/2012	TITLE: Water Cooled Fan Coil Unit	
APPROVED D.A.: WU MEIJUN	APPROVED ENG.: ZHANG JINGFEI	LFPS TYPE	
MODEL: LFPS 150	DRANG NO.: 01	ISSUE: 01	SHEET SIZE: A4

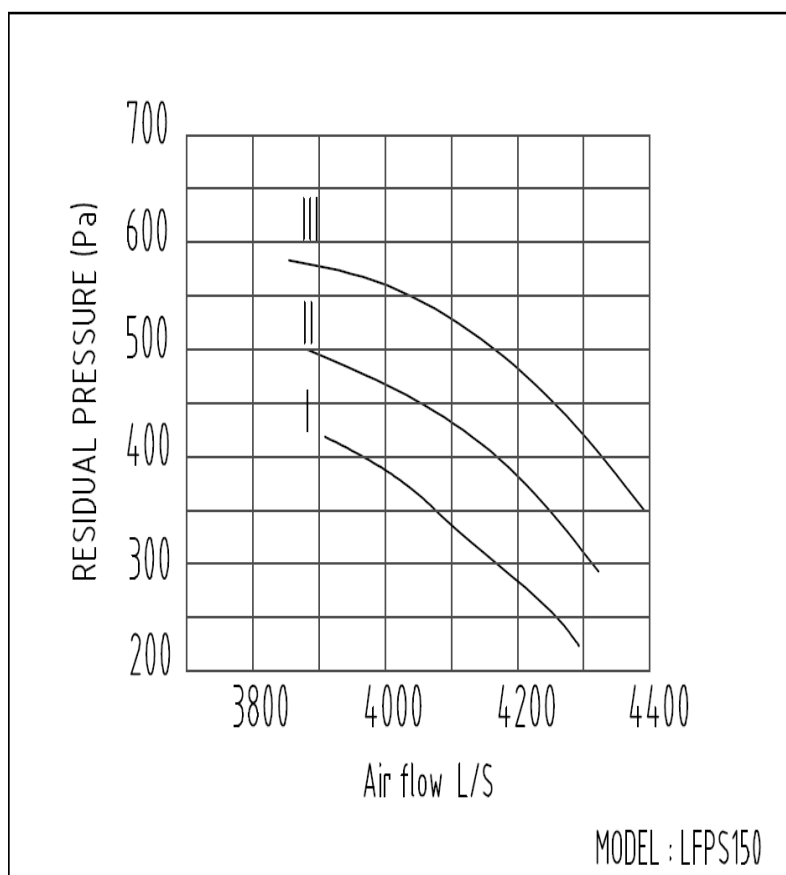
Wiring Diagram

415V/3Ph/50Hz



Super Slim Ceiling Mounted *Air Handling Unit* LFPS150

FAN CURVE



DRAWN BY: GUO JINGPENG	DATE: 13/11/2009		
APPROVED O.A.: WU MEIJUN	APPROVED ENG.: ZHANG JINGFENG	TITLE: Water Cooled Fan Coil Unit LFPS TYPE	
MODEL: LFPS150	DRAWING NO.: 01	ISSUE: 01	SHEET SIZE: A4

Super Slim Ceiling Mounted *Air Handling Unit* LFPS150

NOISE CURVE

