



# DUNNAIR Large Capacity Fan Coil Unit

(Aust) Pty Ltd

## Ceiling Concealed FCU30DF

### Model Number Configuration

FCU30DF : Ceiling Concealed Model

### PERFORMANCE DATA

#### RETURN AIR

Model	Row	Air Flow					Rated Cooling Capacity	Rated heating Capacity	Water Flow	Water Resist-ance	Noise	Input Power	Weight
		L/S											
		SH	HH	H	M	L	kW	kW	L/S	kPa	dB (A)	W	kg
FCU-30DF	3	143	130	119	107	86	3.0	4.4	0.15	8.81	52	130	26

#### *Notes for Return Air :*

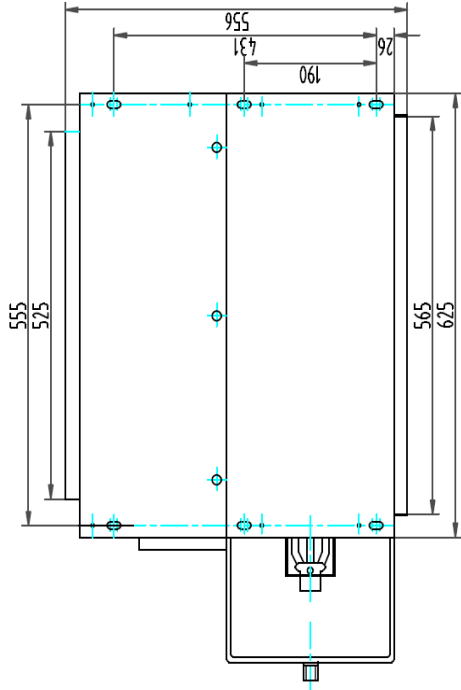
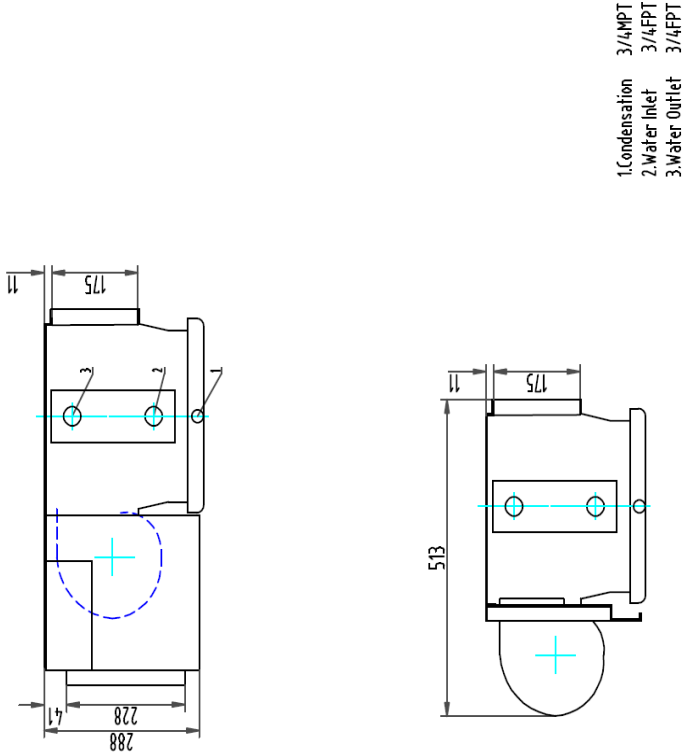
1. Nominal condition is based on (GB/T19232-2003).
2. Cooling:Returnair temp.80.6 °F(27°C) DB,67.1°F(19.5°C) WB
3. Chilled water inlet temp .44.6 °F(7°C) ,water temp rise 41°F(5°C)
4. Heating:Return air temp .69.8(21°C) DB,chilled water inlet temp 140°F(60°C)
5. Water flow rating is as the same as cooling
6. Standard working pressure of fan coil units is 1.8 Mpa,if the requirement is over 1.8 Mpa, please indicate when ordering .

### SPECIFICATION

- Forward curved centrifugal fan
- Single phase motor & direct drive
- Coils: Copper tube & Aluminum fins
- Galvanised sheet casing
- A3 steel sheet painting drip-tray

# Ceiling Concealed

# FCU30DF

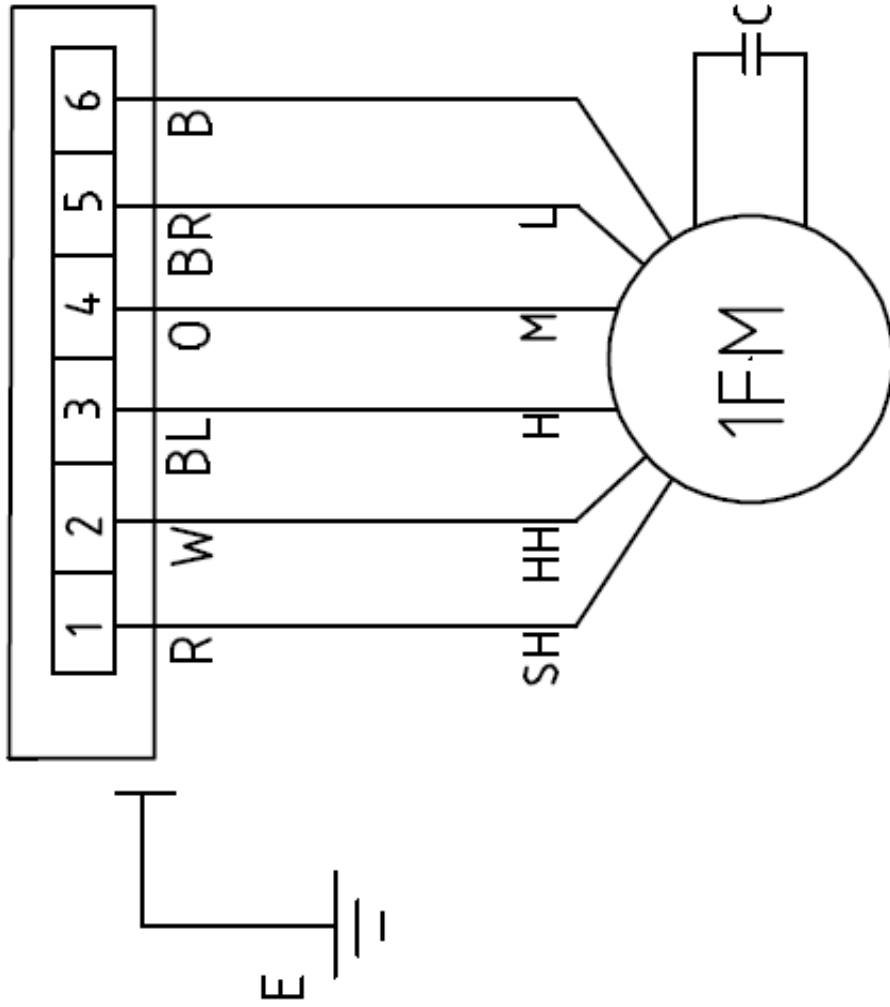


DRAWN BY:	DATE: 2009/10/12	APPROVED Q.A.:	APPROVED ENG.:	TITLE: Water Cooled Fan Coil Unit FCU TYPE	DUNNAIR
MODEL: FCU-30 DF	DRAWING NO.:	ISSUE:	SHEET SIZE:	A4	SHEET 1 OF 1

# Ceiling Concealed

**FCU30DF**

220V/1PH/50HZ



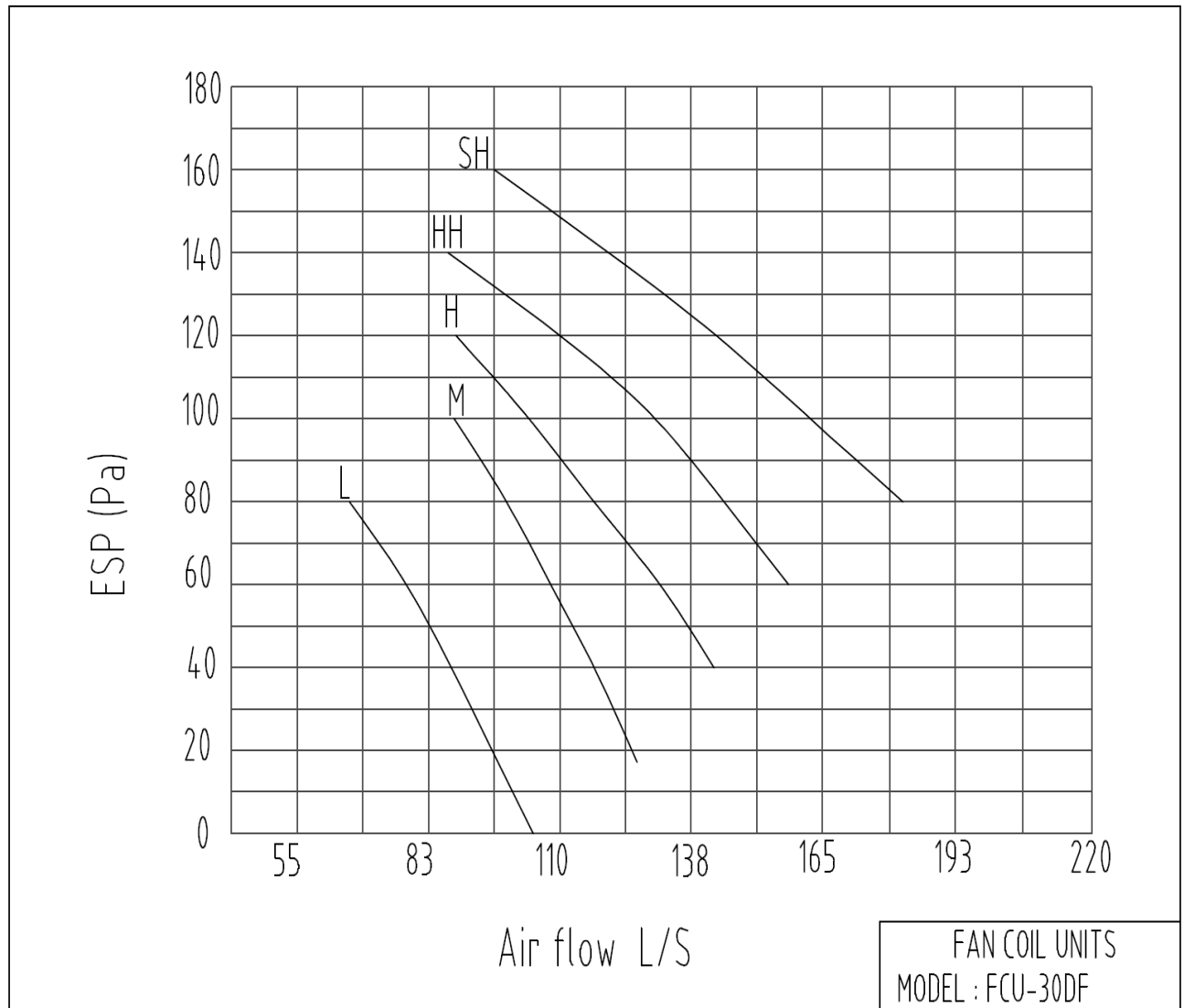
BL BLUE    R RED    B BLACK    C Capacitor  
O ORANGE    BR BROWN    W WHITE    FM Fan motor

**WIRING DIAGRAM**

# FAN COIL UNIT

*Ceiling Concealed*  
*FCU30DF*

## FAN CURVE



# FAN COIL UNIT

## *Ceiling Concealed FCU30DF*

### NOISE CURVE

