



DUNNAIR
(Aust) Pty Ltd

Large Capacity Fan Coil Unit

Ceiling Concealed

FCU240DF

Model Number Configuration

FCU240DF : Ceiling Concealed Model

PERFORMANCE DATA

RETURN AIR

Model	Row	Air Flow					Rated Cooling Capacity	Rated heating Capacity	Water Flow	Water Resist-ance	Noise	Input Power	Weight
		L/S											
		SH	HH	H	M	L							
FCU-240DF	4	1124	1023	934	843	674	21.7	35	1.3	82.26	61	950	87

Notes for Return Air :

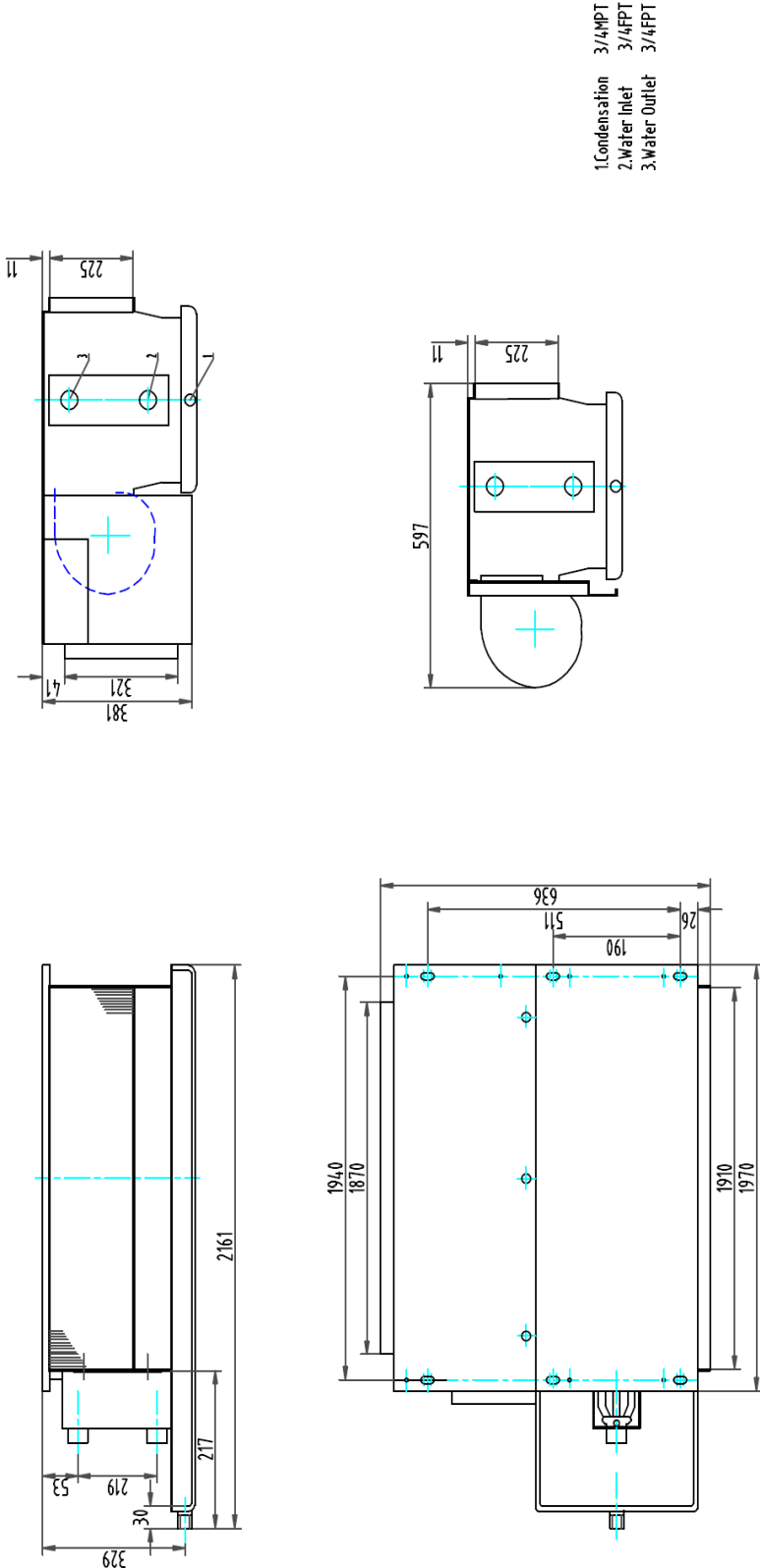
1. Nominal condition is based on (GB/T19232-2003).
2. Cooling:Returnair temp.80.6 °F(27°C) DB,67.1°F(19.5°C) WB
3. Chilled water inlet temp .44.6 °F(7°C) ,water temp rise 41°F(5°C)
4. Heating:Return air temp .69.8(21°C) DB,chilled water inlet temp 140°F(60°C)
5. Water flow rating is as the same as cooling
6. Standard working pressure of fan coil units is 1.8 Mpa,if the requirement is over 1.8 Mpa, please indicate when ordering .


SPECIFICATION

- Forward curved centrifugal fan
- Single phase motor & direct drive
- Coils: Copper tube & Aluminum fins
- Galvanised sheet casing
- A3 steel sheet painting drip-tray

Ceiling Concealed

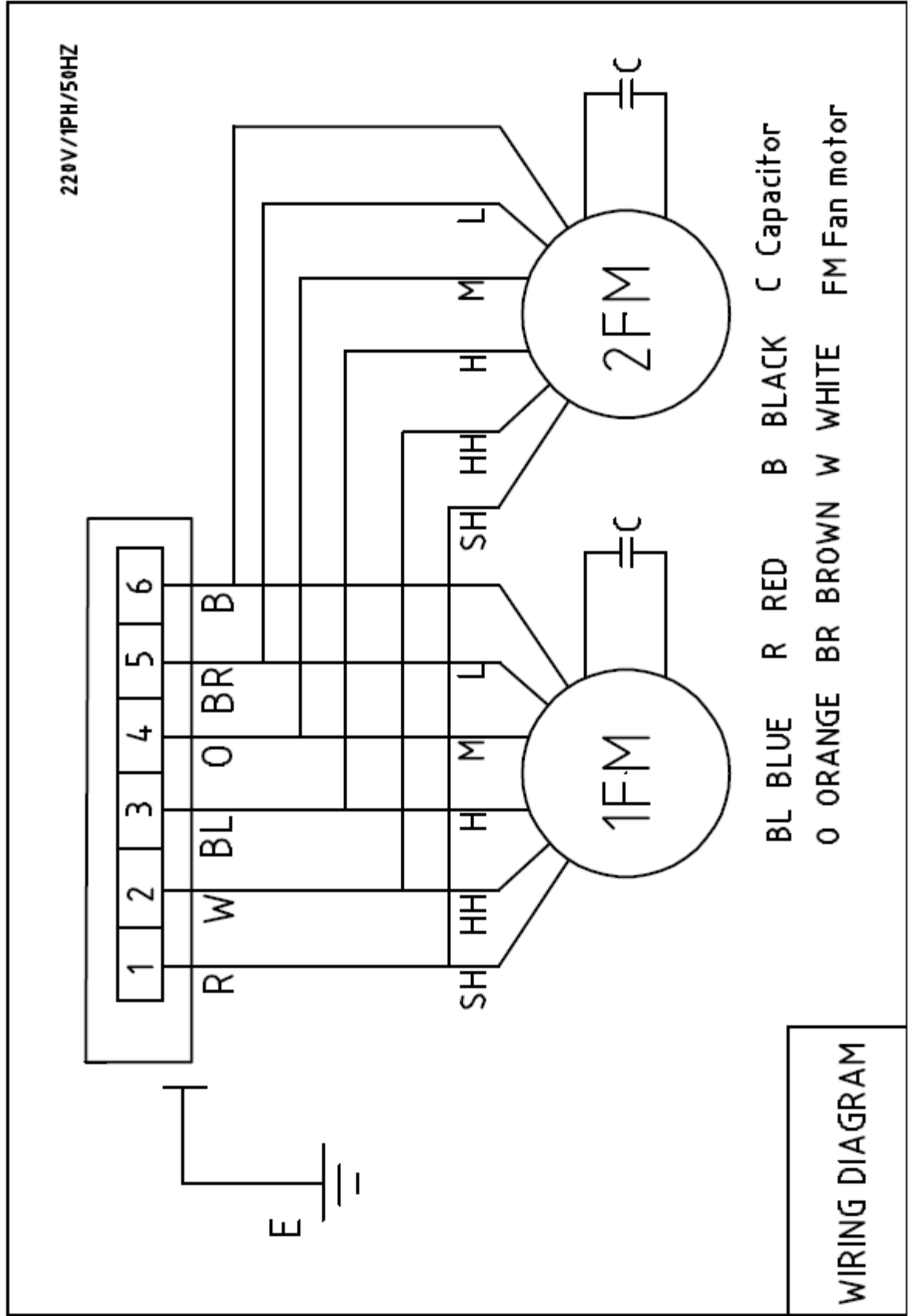
FCU240DF



DRAWN BY:		DATE: 2009/10/12			
APPROVED Q.A.:		APPROVED ENG.:	TITLE:Water Cooled Fan Coil Unit		
MODEL:		FCU TYPE			SHEET SIZE:
FCU-240 DF		DRAWING NO.:		ISSUE:	A4
		SCALE:		SHEET 1 OF 1	

Ceiling Concealed

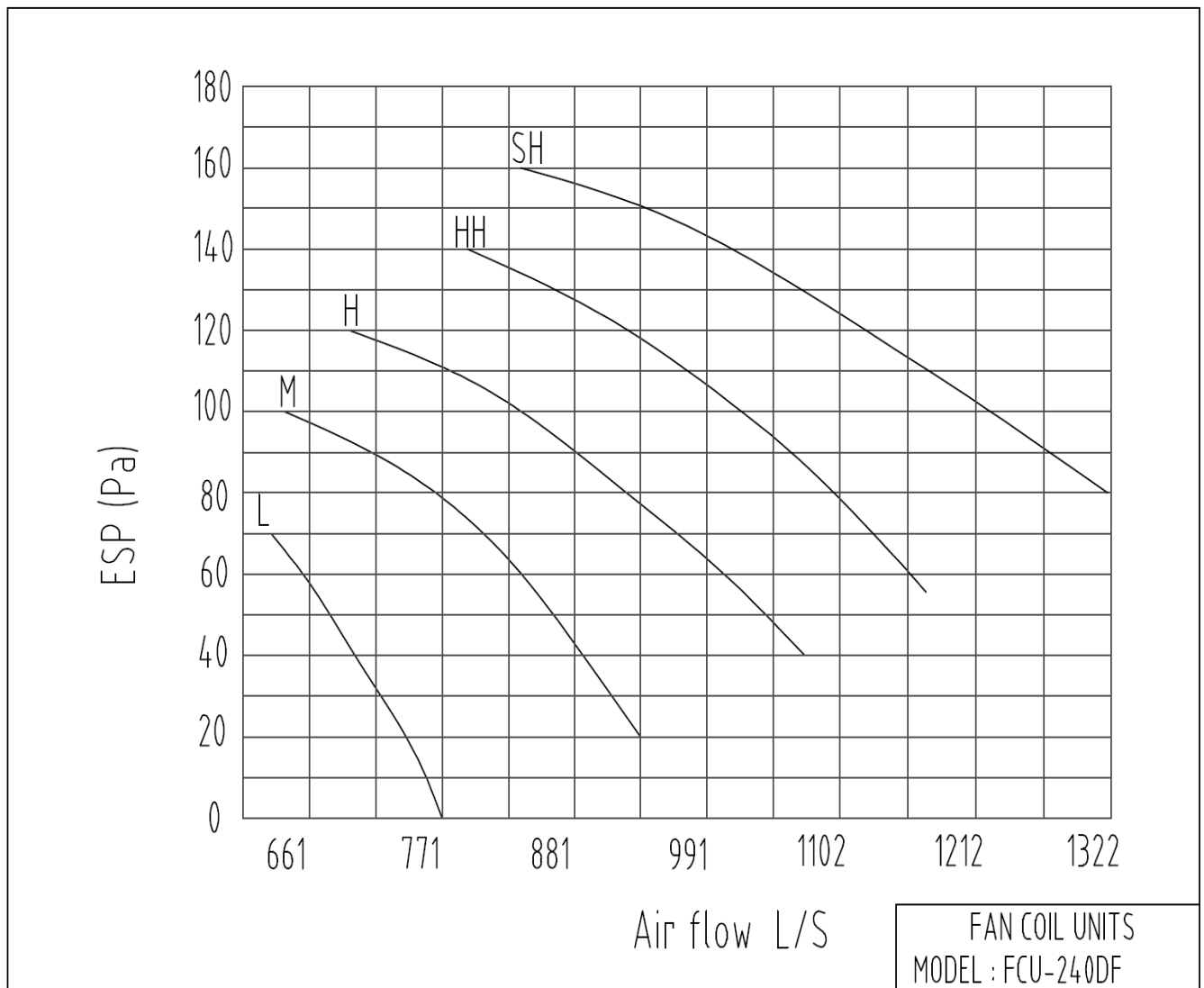
FCU240DF



FAN COIL UNIT

Ceiling Concealed
FCU240DF

FAN CURVE



FAN COIL UNIT

Ceiling Concealed FCU240DF

NOISE CURVE

