

Fan Coil Unit

Ceiling Concealed

FCU120

Model Number Configuration

FCU120-AWS-2	:	2 Row: Standard 12Watt Motor: Ceiling Concealed Model
FCU120-AWS-3	:	3 Row: Standard 12Watt Motor: Ceiling Concealed Model
FCU120-AWM-2	:	2 Row: Medium 30Watt Motor: Ceiling Concealed Model
FCU120-AWM-3	:	3 Row: Medium 30Watt Motor: Ceiling Concealed Model
FCU120-AW-HD-2	:	2 Row: High 50Watt Motor: Ceiling Concealed Model
FCU120-AW-HD-3	:	3 Row: High 50Watt Motor: Ceiling Concealed Model

PERFORMANCE DATA

RETURN AIR

Model	Row	Air Flow			Rated Cooling Capacity	Rated heating Capacity	Water Flow	Water Resistance	Noise			Input Power			Weight		
		L/S							dB (A)			(W)			(kg)		
		H	M	L					kW	kW	L/S	kPa	12 ¹	30 ²	50 ³	12 ¹	30 ²
FCU120-2	2	566.7	448.6	313.9	10.26	15.39	0.49	33	48	49	53	189	212	250	31	32.5	37
FCU120-3	3	566.7	448.6	313.9	10.80	17.20	0.52	35	48	49	53	189	212	250	34	35.5	40

Notes for Return Air :

1. Cooling: Air on temp. DB/WB 27°C/19.5°C , Water in/out temp.7°C/12°C .
2. Heating: Air on temp. 21°C DB . Water in temp. 60°C.

SPECIFICATION

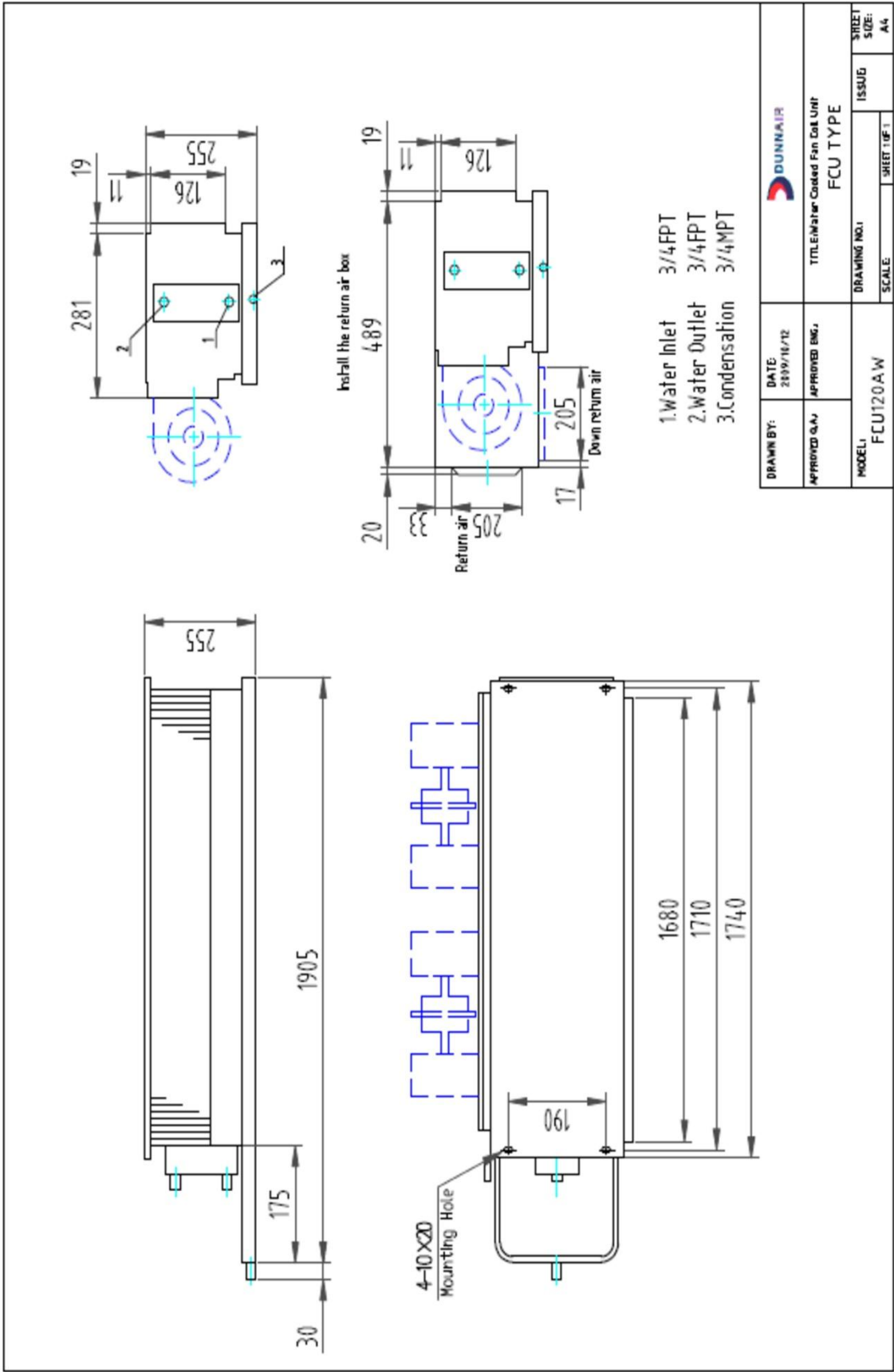
- Forward curved centrifugal fan
- Single phase motor & direct drive
- Coils: Copper tube & Aluminum fins
- Galvanised sheet casing
- A3 steel sheet painting drip-tray
- Capacitance type motor

¹ Standard Watt Motor (Pa)

² Medium Watt Motor (Pa)

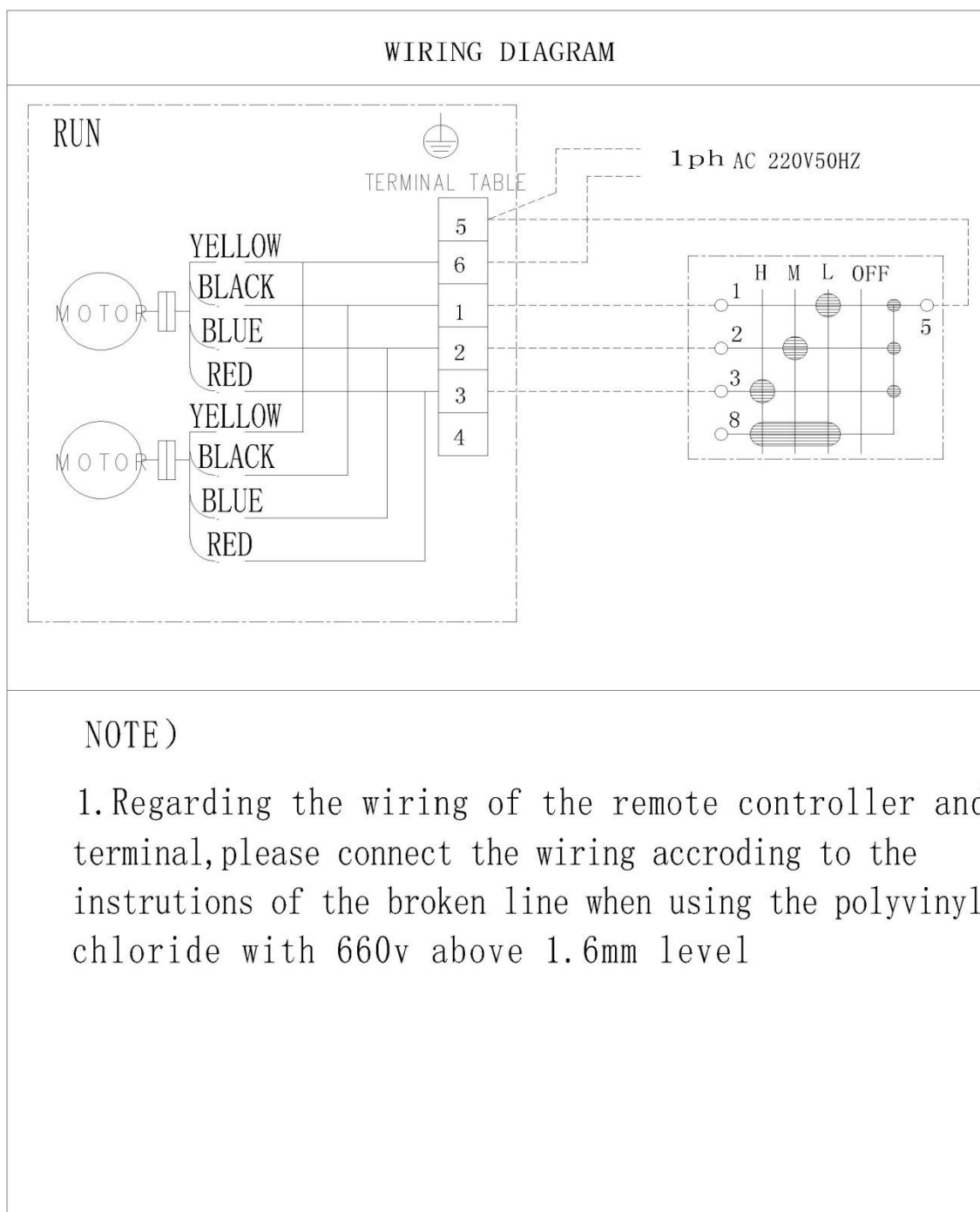
³ High Watt Motor (Pa)

Ceiling Concealed FCU120



FAN COIL UNIT

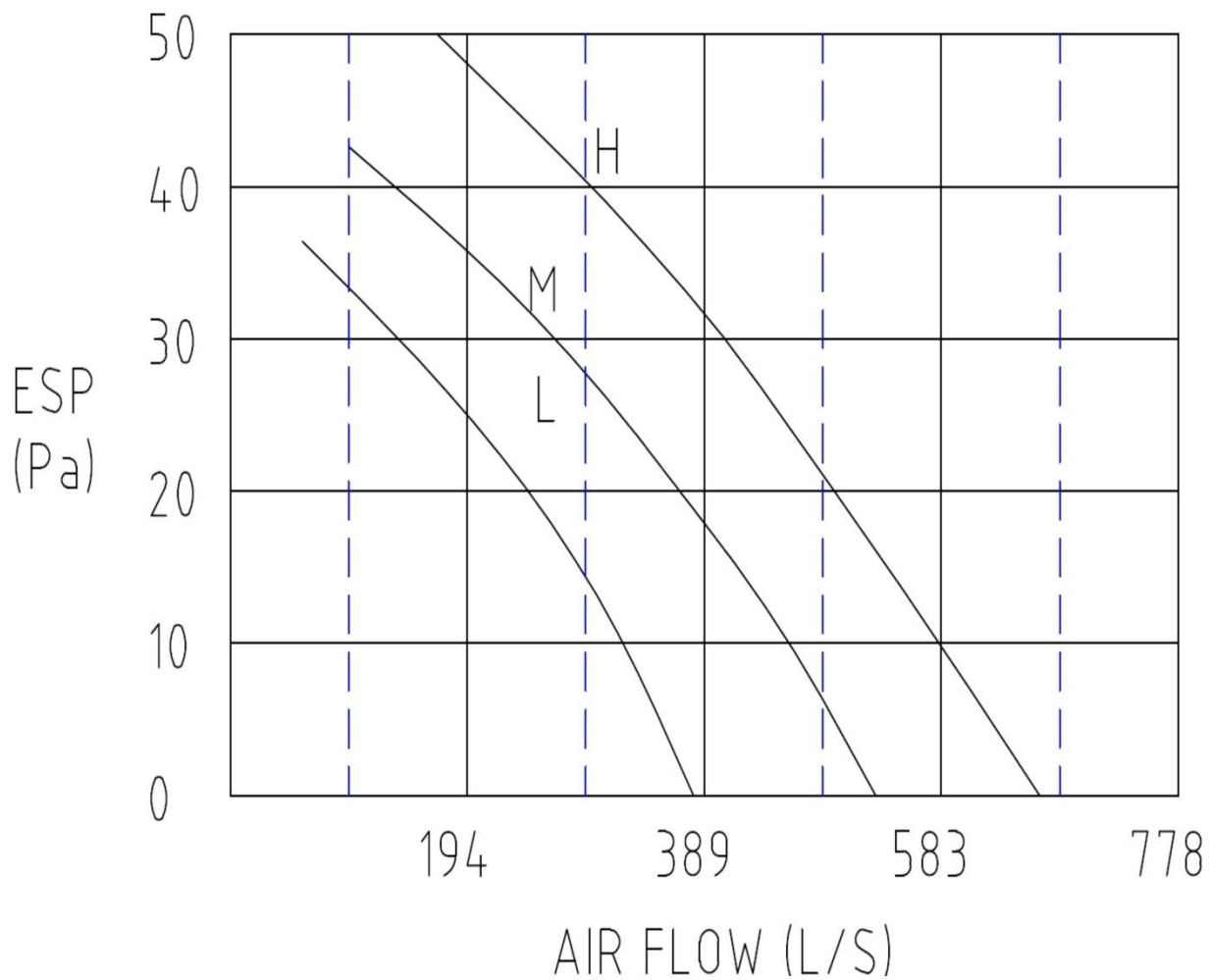
Ceiling Concealed FCU120



FAN COIL UNIT

Ceiling Concealed FCU120

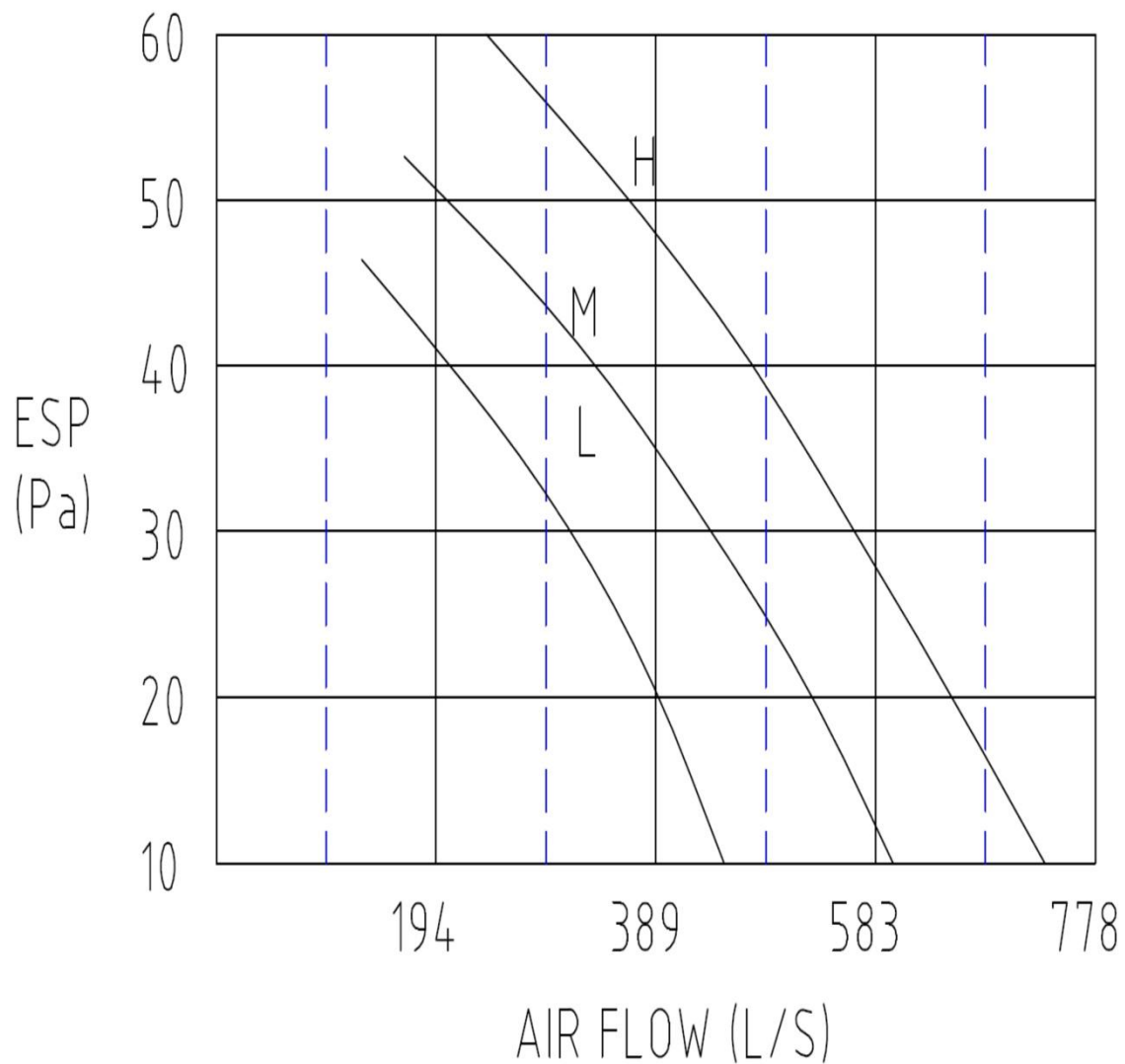
FAN CURVE – Standard 12 Watt



FAN COIL UNIT

Ceiling Concealed FCU120

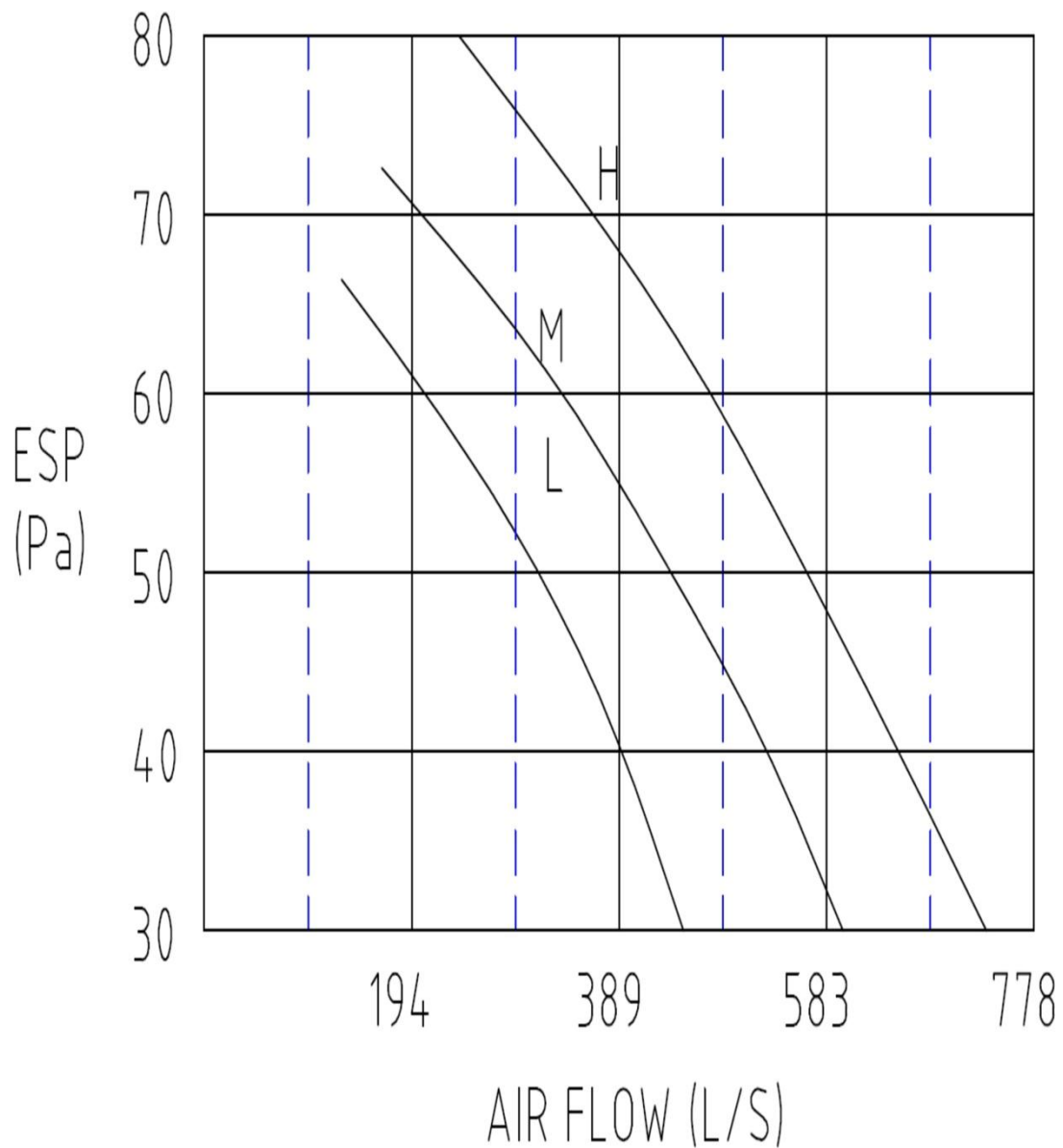
FAN CURVE – Medium 30 Watt



FAN COIL UNIT

Ceiling Concealed FCU120

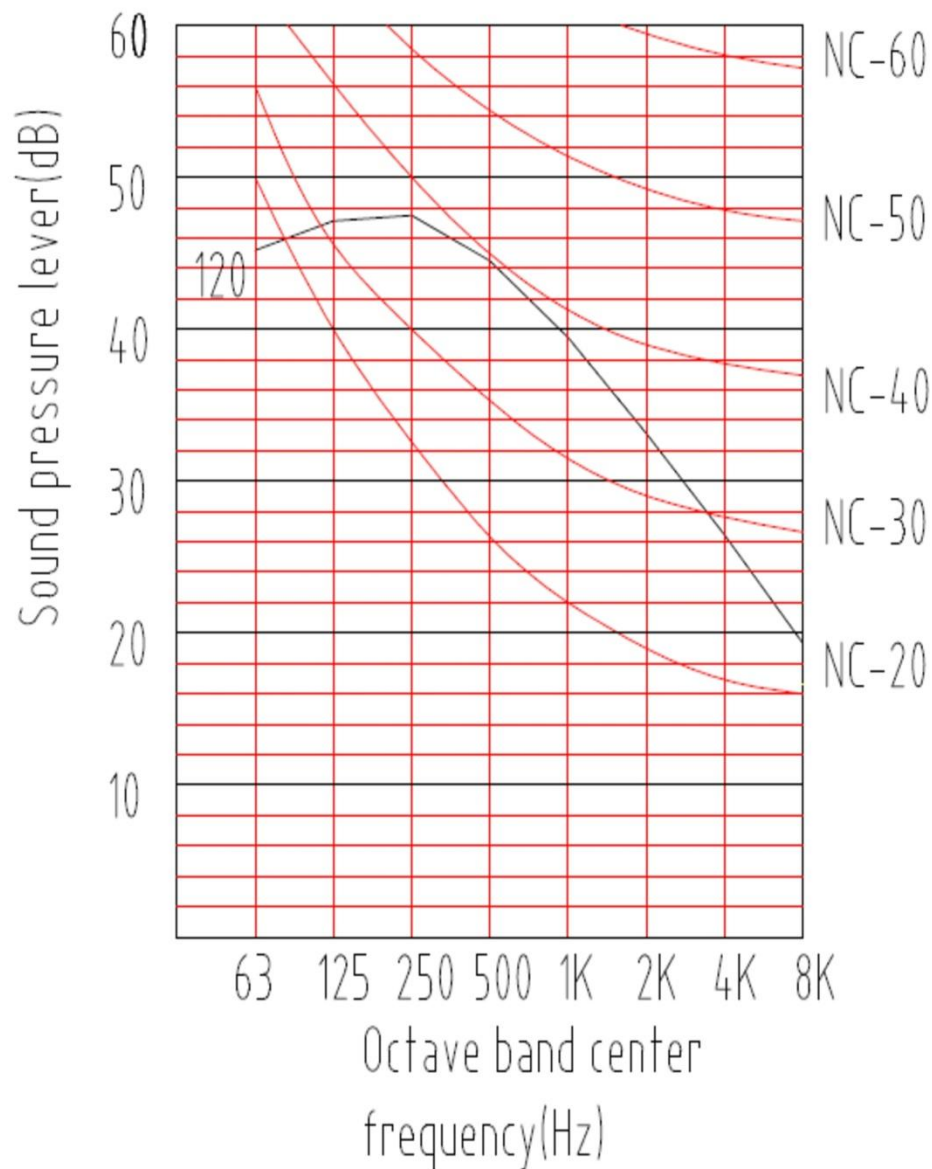
FAN CURVE – High Static 50 Watt



FAN COIL UNIT

Ceiling Concealed FCU120

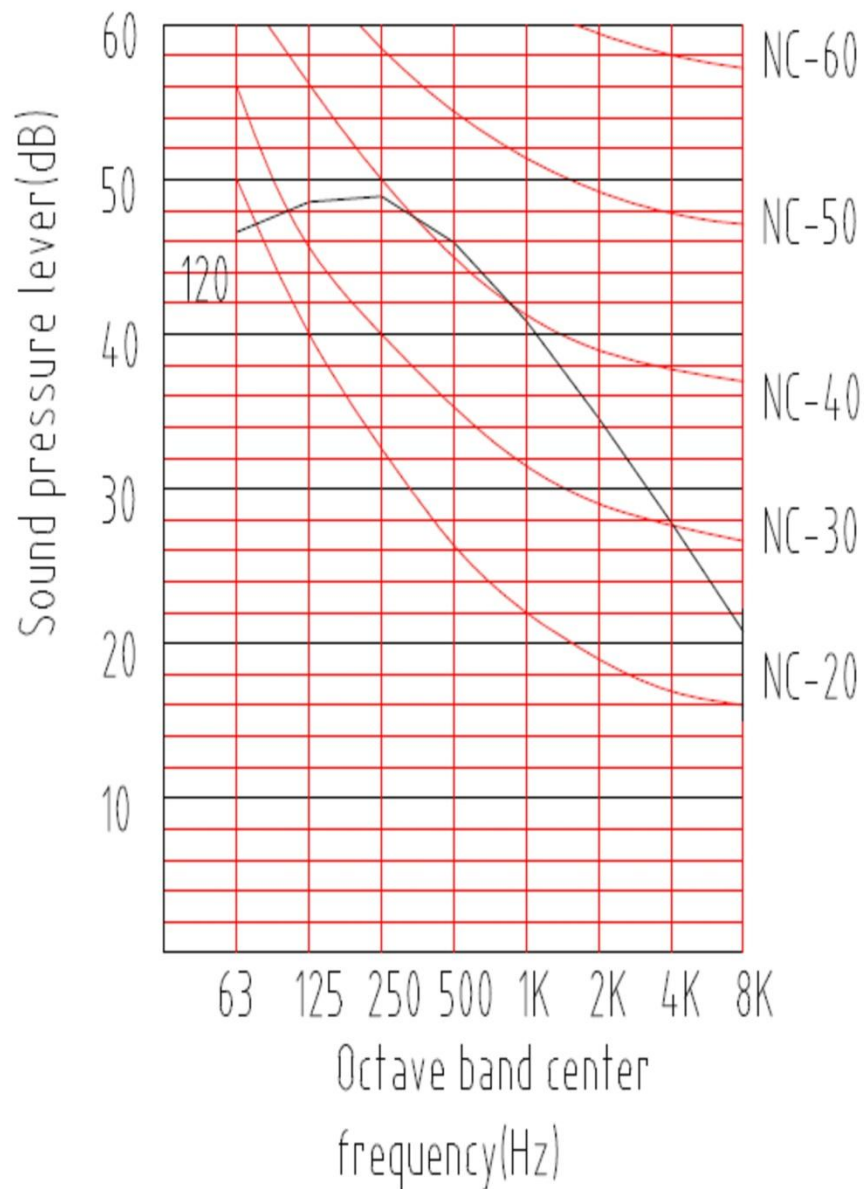
NOISE CURVE – Standard 12 Watt



FAN COIL UNIT

Ceiling Concealed FCU120

NOISE CURVE – Medium 30 Watt



FAN COIL UNIT

Ceiling Concealed FCU120

NOISE CURVE – High Static 50 Watt

