

# Fan Coil Unit

## Luxurious Cassettes

### FCU100

#### Model Number Configuration

FCU100-XD-A : Luxurious Cassette

#### PERFORMANCE DATA

##### RETURN AIR

Model	Row	Air Flow			Rated Cooling Capacity	Rated heating Capacity	Water Flow	Water Resistance	Noise	Input Power	Weight
		L/S									
		H	M	L							
FCU100	2	472	351	267	9	13.5	0.43	35.4	48	152	31

#### Notes for Return Air:

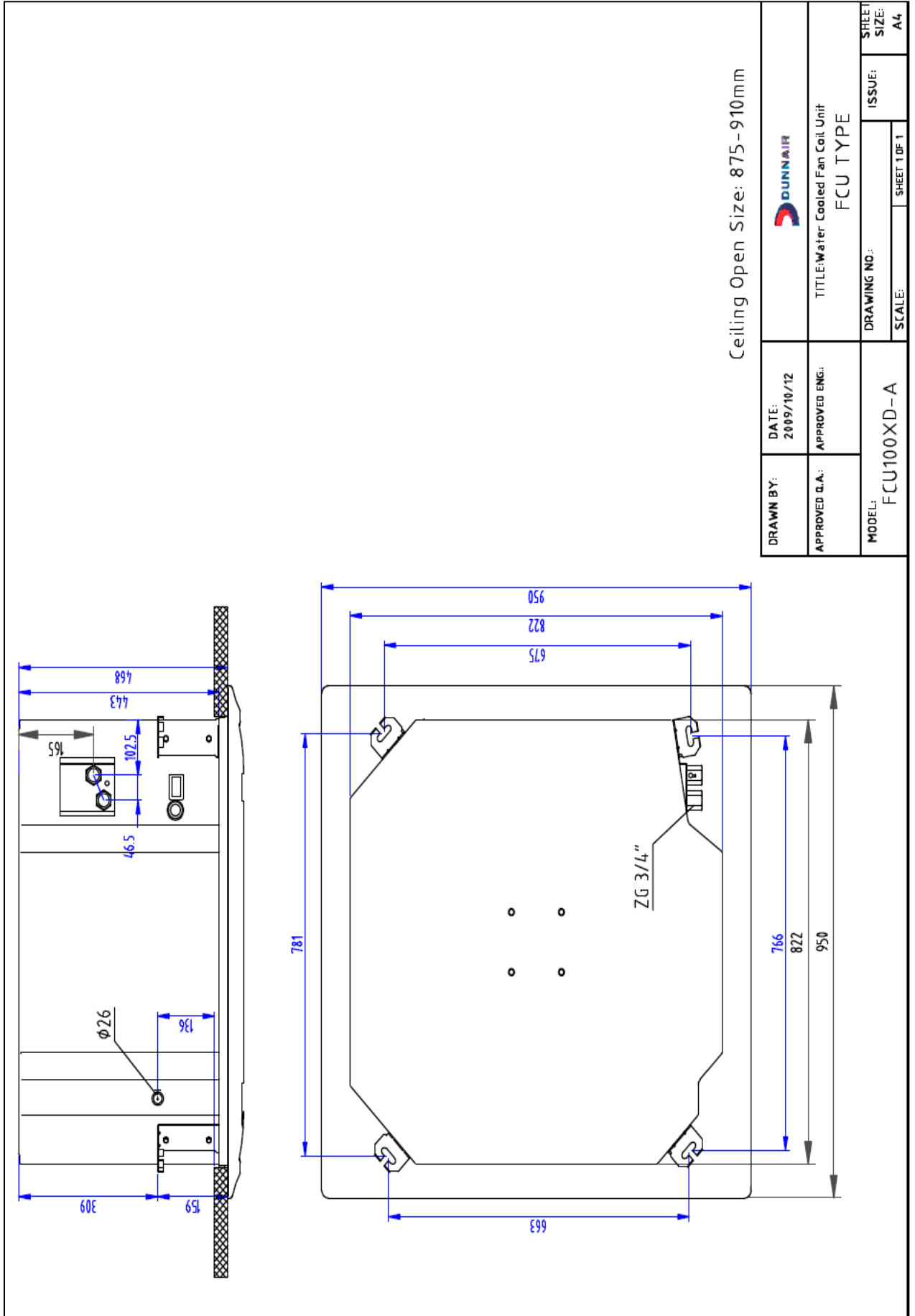
1. Cooling: Air on temp. DB/WB 27°C/19.5°C, Water in/out temp.7°C/12°C.
2. Heating: Air on temp. 21°C DB . Water in temp. 60°C.

#### SPECIFICATION

- Forward curved centrifugal fan
- Single phase motor & direct drive
- Coils: Copper tube & Aluminum fins
- Galvanised sheet casing
- A3 steel sheet painting drip-tray
- Capacitance type motor

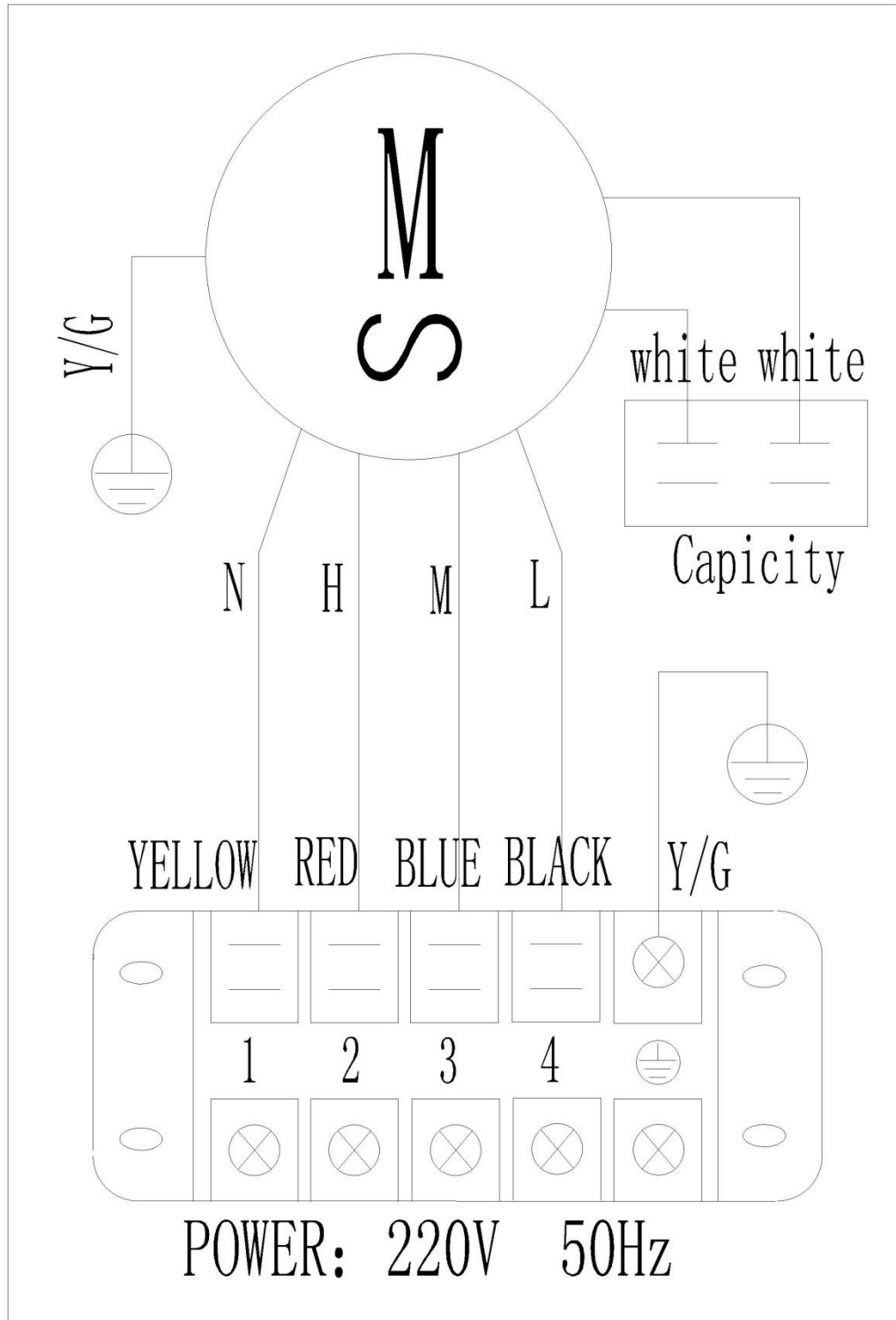
# Luxurious Cassettes

# FCU100



# FAN COIL UNIT

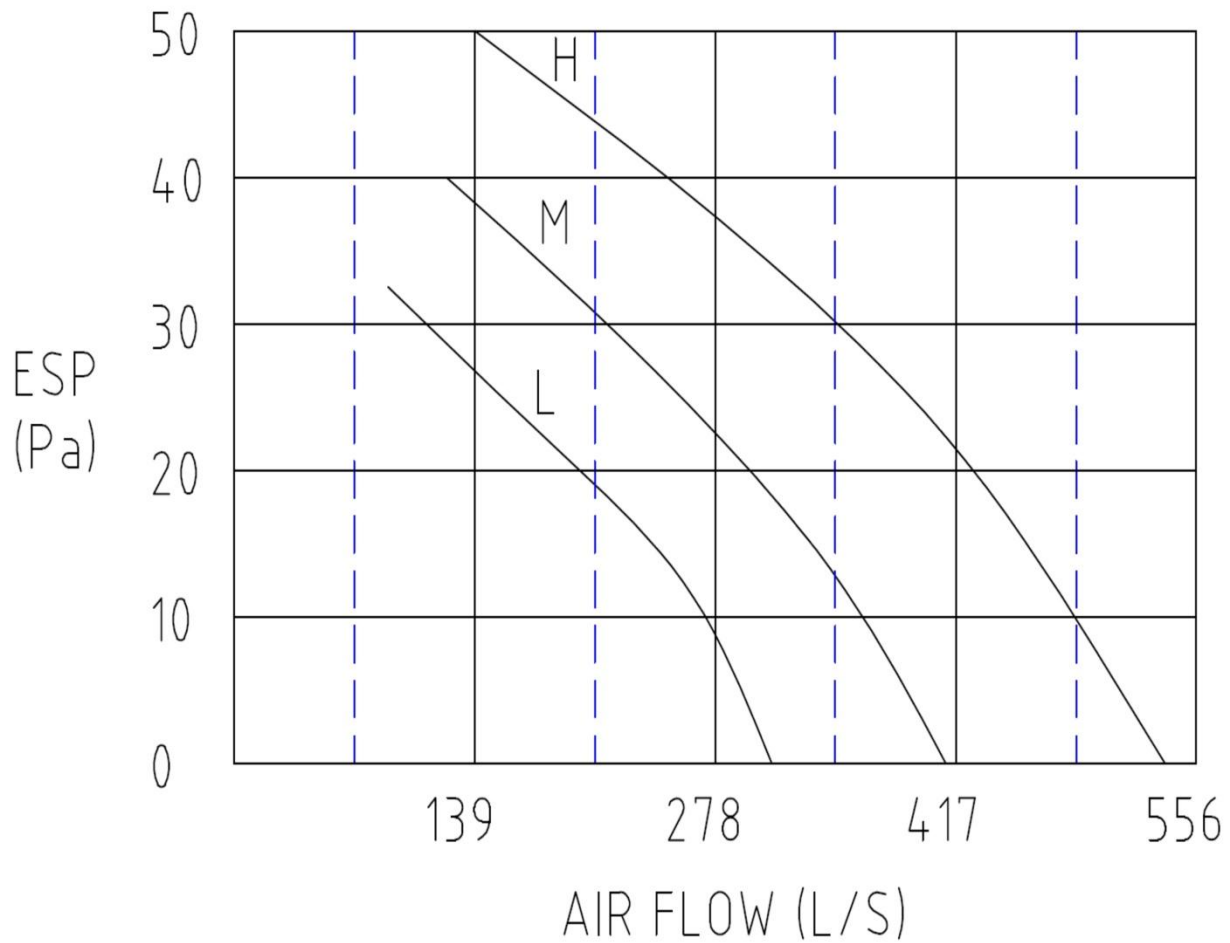
## *Luxurious Cassettes* *FCU100*



# FAN COIL UNIT

## *Luxurious Cassettes* *FCU100*

### FAN CURVE



# FAN COIL UNIT

## *Luxurious Cassettes* *FCU100*

### NOISE CURVE

